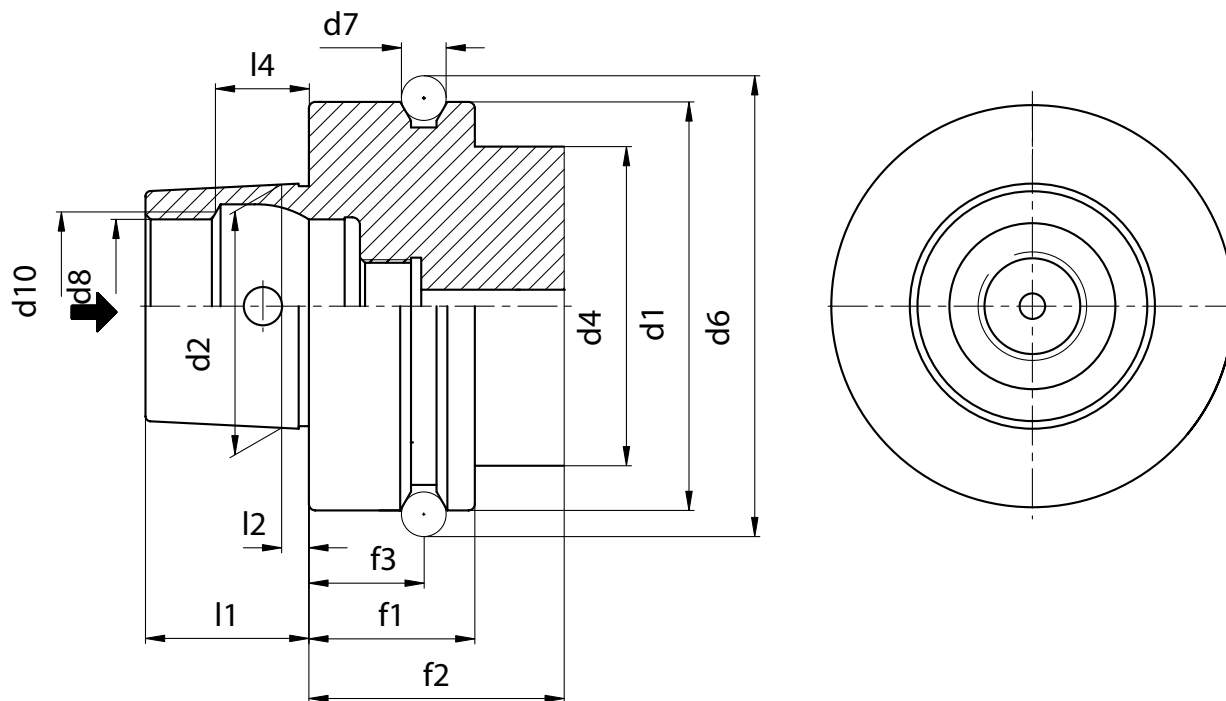




# HSK DIN 69893 F

**TECHNISCHE DATEN DER STEILKEGELWERKZEUGE  
TAPER SHANKS DATA SHEET  
DONNES TECHNIQUES QUEUE D'OUTILS  
DATI TECNICI CONI D'ATTACCO**



	HSK 50	HSK 63
d1	50	63
d2	30	38
d4	42	53
d6	59,3	72,3
d7	7	7
d8	21	26
d10	23	29
f1	26	26
f2	42	42
f3	18	18
l1	20	25
l2	4	5
l4	11,42	14,13



### Forma F

- Usato su elettromandri e su macchine per il legno.
- Con flangia maggiorata.
- Adduzione refrigerante al centro.



### Forme F

- Utilisation pour des broches à hautes fréquences, les machines à usiner le bois.
- Avec épaulement agrandi.
- Possibilité d'alimentation centrale du liquide de lubrification par tube d'arrosage.



### Form F

- Used for high frequency spindles and wood machining.
- With larger collar.
- Central coolant supply possible through coolant hose.

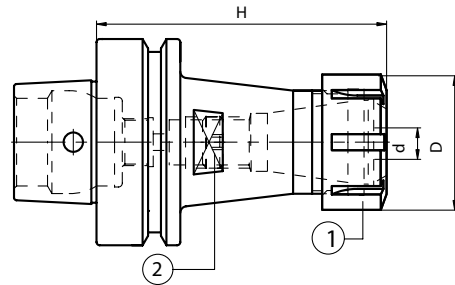


### Form F

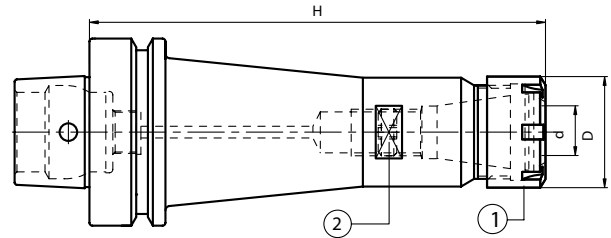
- Anwendung für Hochfrequenzspindeln, Holzbearbeitungsmaschinen.
- Mit vergrößertem Bund.
- Zentrale Kühlmittelzufuhr über Kühlmittelrohr möglich.

**SPANNZANGENFUTTER ER TYP  
ER COLLET CHUCK  
MANDRINS A PINCES TYPE ER  
MANDRINI PORTAPINZA TIPO ER**

**DIN 6499**


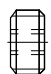


	HSK	Code N.	Description	H	d	D	ER
<b>STANDARD</b>	50	214-37401	HSK50FH80ER16M	80	0,5÷10	22	16M
	50	214-37402	HSK50FH80ER25	80	1÷16	42	25
	50	214-37403	HSK50FH100ER32	100	2÷20	50	32
	50	214-37433	HSK50FH68ER40	68	3÷30	63	40
	63	214-37404	HSK63FH100ER16M	100	0,5÷10	22	16M
	63	214-37405	HSK63FH100ER25	100	1÷16	42	25
	63	214-37406	HSK63FH100ER32	100	2÷20	50	32
	63	214-37407	HSK63FH80ER40	80	3÷30	63	40
63	214-37408	HSK63FH120ER40	120	3÷30	63	40	

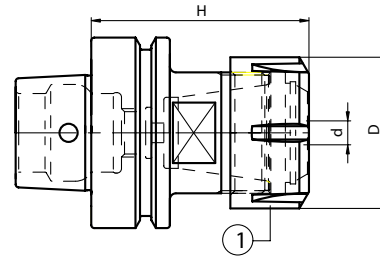


	HSK	Code N.	Description	H	d	D	ER
<b>EXTENDED</b>	50	214-37409	HSK50FH150ER16M	150	0,5÷10	22	16M
	50	214-37410	HSK50FH150ER25M	150	1÷16	35	25M
	63	214-37411	HSK63FH160ER16M	160	0,5÷10	22	16M
	63	214-37412	HSK63FH160ER25M	160	1÷16	35	25M
	63	214-37413	HSK63FH160ER32	160	2÷20	50	32

**Ersatzteile / Spare parts / Pieces detachees / Componenti**


ER	Nut	Stop screw
		
16M	812-203043	811-303119
25M	812-203045	811-303121
25	812-203016	811-303121
32	812-203017	811-303118
40/H120	812-203018	811-303122
40/H68;80	812-203018	-

**ER-SPANNZANGENFUTTER FÜR HOLZBEARBEITUNG  
ER TOOLHOLDERS FOR WOODWORKING  
MANDRINS PORTE-PINCES POUR BOIS  
MANDRINI PORTAPINZA TIPO ER PER MACCHINE LAVORAZIONE LEGNO **DIN 6499****

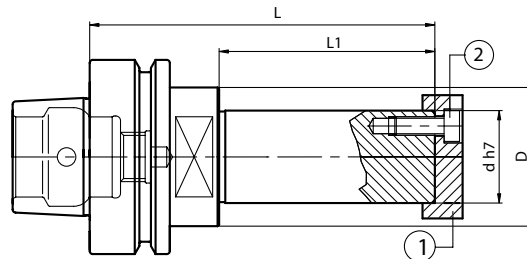
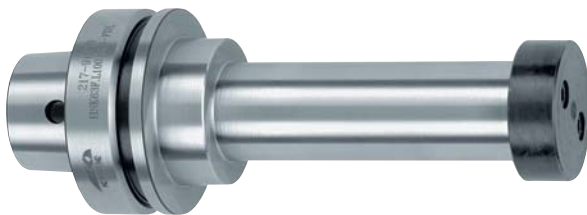


HSK	Code N.	Description	ER	d	D	H	Nut type
63	214-37429	HSK63FH72ER32DX	32	2-20	50	72	Right
63	214-37436	HSK63FH72ER40DX	40	3-30	63	72	Right
63	214-37435	HSK63FH72ER32SX	32	2-20	50	72	Left
63	214-37437	HSK63FH72ER40SX	40	3-30	63	72	Left

**Ersatzteile / Spare parts / Pieces detachees / Componenti**


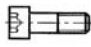
HER/Type	Nut
	
32/DX	812-203017
40/DX	812-203018
32/SX	812-203035
40/SX	812-203034

**SCHEIBENFRÄSER-AUFSTECKFRÄSDORNE FÜR HOLZBEARBEITUNG  
FACE MILL HOLDERS FOR WOODWORKING  
MANDRINS PORTE-FRAISES-ENTRAINEMENT PAR TENON POUR BOIS  
MANDRINI PORTAFRESE A DISCO PER MACCHINE LAVORAZIONE LEGNO**



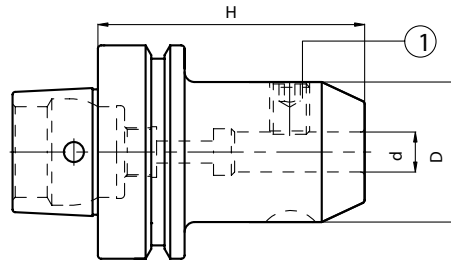
HSK	Code N.	Description	D	d (h7)	L	L1
63	217-91818	HSK63FL70D30-FDL	45	30	112	70
63	217-91819	HSK63FL100D30-FDL	45	30	142	100
63	217-91820	HSK63FL70D35-FDL	53	35	112	70
63	217-91821	HSK63FL100D35-FDL	53	35	142	100

**Ersatzteile / Spare parts / Pieces detachees / Componenti**

D	Ring	Screw
		
30	832-014020	811-101028
35	832-014311	811-101028

ZYLINDERSCHAFTAUFNAHME WELDON  
 END MILL HOLDERS WELDON  
 MANDRINS POUR OUTIL TYPE WELDON  
 MANDRINI PORTAFRESE TIPO WELDON

**DIN 1835/B**



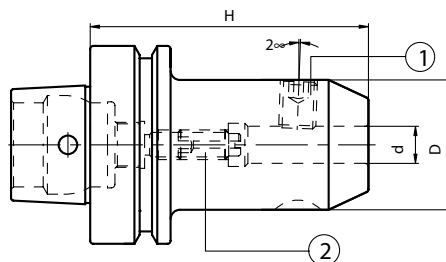
HSK	Code N.	Description	H	d	D
50	213-17401	HSK50FH65WE06	65	6	25
50	213-17402	HSK50FH65WE08	65	8	28
50	213-17403	HSK50FH70WE10	70	10	35
50	213-17404	HSK50FH80WE12	80	12	42
50	213-17405	HSK50FH80WE16	80	16	48
50	213-17406	HSK50FH85WE20	85	20	52
63	213-17407	HSK63FH75WE06	75	6	25
63	213-17408	HSK63FH75WE08	75	8	28
63	213-17409	HSK63FH75WE10	75	10	35
63	213-17410	HSK63FH80WE12	80	12	42
63	213-17411	HSK63FH80WE16	80	16	48
63	213-17412	HSK63FH85WE20	85	20	52
63	213-17413	HSK63FH110WE25	110	25	65

### Ersatzteile / Spare parts / Pieces detachees / Componenti

D	Locking screw	Quantity
6	811-106001	1
8	811-106002	1
10	811-106004	1
12	811-106005	1
16	811-106006	1
20	811-106007	1
25	811-106008	2


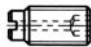
ZYLINDERSCHAFTAUFNAHME WHISTLE-NOTCH  
 END MILL HOLDERS WHISTLE-NOTCH  
 MANDRINS POUR OUTIL TYPE WHISTLE-NOTCH  
 MANDRINI PORTAFRESE TIPO WHISTLE-NOTCH

**DIN 1835/E**



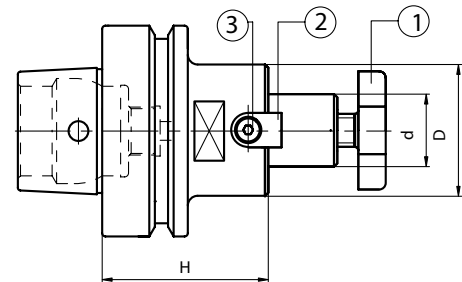
HSK	Code N.	Description	H	d	D
50	213-37401	HSK50FH80WN06	80	6	25
50	213-37402	HSK50FH80WN08	80	8	28
50	213-37403	HSK50FH80WN10	80	10	35
50	213-37404	HSK50FH90WN12	90	12	42
50	213-37406	HSK50FH100WN16	100	16	48
50	213-37408	HSK50FH100WN20	100	20	52
50	213-37409	HSK50FH110WN25	110	25	65
63	213-37410	HSK63FH80WN06	80	6	25
63	213-37411	HSK63FH80WN08	80	8	28
63	213-37412	HSK63FH80WN10	80	10	35
63	213-37413	HSK63FH90WN12	90	12	42
63	213-37415	HSK63FH100WN16	100	16	48
63	213-37417	HSK63FH100WN20	100	20	52
63	213-37418	HSK63FH110WN25	110	25	65
63	213-37419	HSK63FH115WN32	115	32	72

### Ersatzteile / Spare parts / Pieces detachees / Componenti

d	Locking screw	Quantity	Stop screw
			
6	811-106001	1	811-303043
8	811-106002	1	811-303081
10	811-106004	1	811-303089
12	811-106005	1	811-303090
16	811-106006	1	811-303091
20	811-106007	1	811-303091
25	811-106008	2	811-303091
32	811-106009	2	811-303091

**AUFSTECKFRÄSDORNE FÜR FRÄSER MIT QUERNUT  
FACE MILL HOLDERS-TENONS DRIVE  
MANDRINS PORTE-FRAISE-ENTRAINEMENT PAR TENONS  
MANDRINI PORTAFRESE A TRASCINAMENTO FISSO**

**ISO 3937**



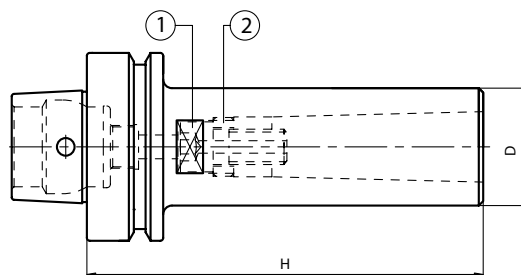
HSK	Code N.	Description	H	d	D
50	216-77401	HSK50FH45D16F	45	16	38
50	216-77402	HSK50FH55D22F	55	22	48
50	216-77403	HSK50FH55D27F	55	27	58
63	216-77404	HSK63FH45D16F	45	16	38
63	216-77405	HSK63FH50D22F	50	22	48
63	216-77406	HSK63FH55D27F	55	27	58
63	216-77407	HSK63FH60D32F	60	32	78
63	216-77408	HSK63FH65D40F	65	40	88

**Ersatzteile / Spare parts / Pieces detachees / Componenti**

d	Cross screw	Dog	Screw
16	811-107003	814-20228	811-101004
22	811-107004	814-20225	811-101011
27	811-107005	814-20227	811-101018
32	811-107006	814-20263	811-101029
40	811-107007	814-20271	811-101029



**ZWISCHENHÜLSEN FÜR MORSEKEGEL MIT ANZUGSGEWINDE**  
**MORSE TAPER ADAPTER WITH TREAD**  
**DOUILLES POUR CONE MORSE AVEC TARAUDAGE**  
**MANDRINI PORTAFRESE ATTACCO CONO MORSE**

**DIN 228-2 C**



HSK	Code N.	Description	Morse	H	D
50	212-27401	HSK50FH90CM1F	1	90	25
50	212-27402	HSK50FH115CM2F	2	115	32
50	212-27403	HSK50FH140CM3F	3	140	40
63	212-27404	HSK63FH100CM1F	1	100	25
63	212-27405	HSK63FH125CM2F	2	125	32
63	212-27406	HSK63FH145CM3F	3	145	40
63	212-27407	HSK63FH165CM4F	4	165	48

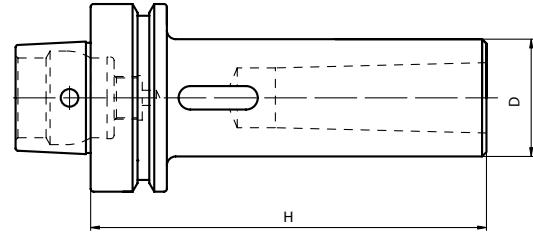
**Ersatzteile / Spare parts / Pieces detachees / Componenti**

HSK/MORSE	Screw	Ring
		
50/1	811-401100	811-302037
50/2	811-401066	811-302031
50/3	811-401067	811-302032
63/1	811-401100	811-302037
63/2	811-401066	811-302031
63/3	811-401067	811-302032
63/4	811-401096	811-302036



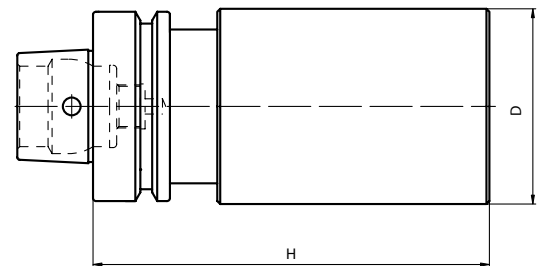
**ZWISCHENHÜLSEN FÜR MORSEKEGEL MIT AUSTREIBBLAPPEN**  
**MORSE TAPER ADAPTORS FOR DRILLS**  
**DOUILLES POUR CONE MORSE A TENON**  
**MANDRINI PORTAPUNTE ATTACCO CONO MORSE**

**DIN 228-2 D**



HSK	Code N.	Description	Morse	H	D
50	212-47401	HSK50FH115CM1P	1	115	25
50	212-47402	HSK50FH130CM2P	2	130	32
50	212-47403	HSK50FH150CM3P	3	150	40
63	212-47404	HSK63FH105CM1P	1	105	25
63	212-47405	HSK63FH120CM2P	2	120	32
63	212-47406	HSK63FH140CM3P	3	140	40
63	212-47407	HSK63FH165CM4P	4	165	48

**ROHLINGE**  
**BLANK TOOLHOLDERS**  
**EBAUCHE**  
**MANDRINI SEMILAVORATI A STELO TENERO**



HSK	Code N.	Description	H	D
50	217-17401	HSK50FH200D63SM	200	63
63	217-17402	HSK63FH200D63SM	200	63

