

**FRÄSER MIT WENDESCHNEIDPLATTEN
WENDENPLATTEN-VOLLBOHER
FÜR BEARBEITUNGSZENTRUM**

**MILLING CUTTERS WITH INDEXABLE INSERTS
WORKING CENTER HIGH SPEED DRILLS**

**FRAISES À FIXAGE MÉCANIQUE
FORET A PLAQUETTES POUR CENTRE D'USINAGE**

**FRESE A FISSAGGIO MECCANICO
PUNTE AD INSERTI PER CENTRI DI LAVORO**



SUMMARY

INDEX

INHALTSVERZEICHNIS

SOMMAIRE

INDEX



Page 353



Page 354



Page 355



Page 356



Page 357



Page 358



Page 359



Page 360



Page 361



Page 362



Page 363



Page 364



Page 365



Page 366



Page 367



Page 368

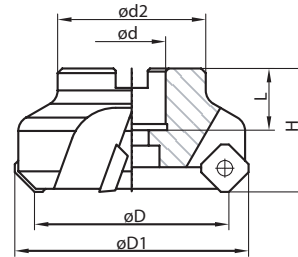


Page 369

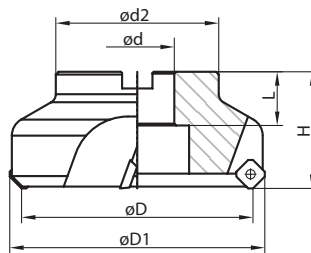


Page 371

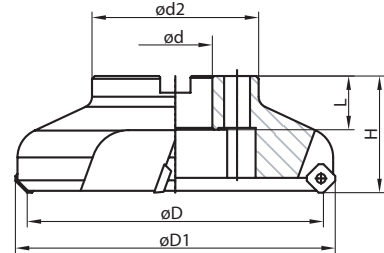
PLANMESSERKOPF (45°)
FACE MILLING CUTTERS (45°)
FRAISES À SURFACE (45°)
FRESE PER SPIANATURA (45°)



Type "A"




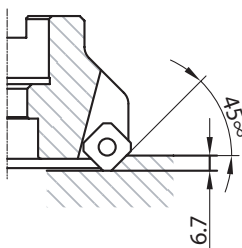
Type "B"

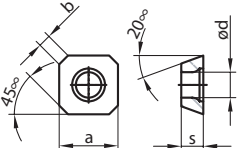


Type "C"

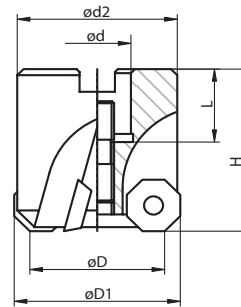
Major cutting edge angle $\kappa=45^\circ$ Radial angle $\gamma_f=-9$ Axial angle $\gamma_p=+20$

CODE	DIMENSIONS							Type	Insert	SPARE PARTS	
	ϕD	ϕd_{H7}	$\phi d2$	D1	H	Z	L			Screw	Wrench
444-04124	40	16	38	53	40	3	18	A	SEHW SEHX SEHT SECA 1204..	M5x10.5 TR22	
444-04125	50	22	48	63	40	4	20	A			
444-04126	63	22	48	76	40	5	20	A			
444-04127	80	27	58	93	50	6	22	A			
444-04225	100	32	78	113	50	7	26	B			
444-04226	125	40	88	138	63	7	29	B			
444-04321	160	40	90	173	63	8	29	C			

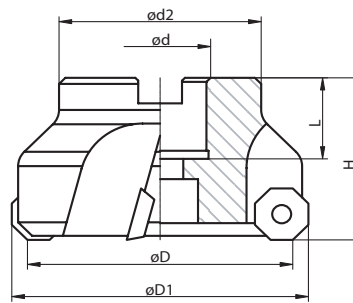


Inserto Insert Wendeplatte		SEHW 1204.. SEHX 1204.. SEHT 1204.. SECA 1204..			
		a	s	d	b
		12.7	4.76	5.5	2.7

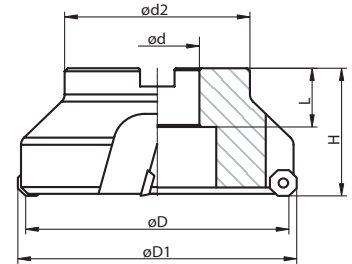
PLANMESSERKOPF (43°)
FACE MILLING CUTTERS (43°)
FRAISES Á SURFACE (43°)
FRESE PER SPIANATURA (43°)



Type "A"




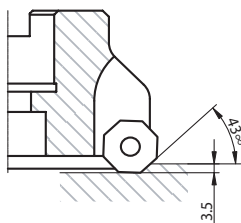
Type "B"



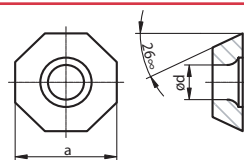
Type "C"

Major cutting edge angle $\kappa=43^\circ$ Radial angle $\gamma_f=+5$ Axial angle $\gamma_p=+15$

CODE	DIMENSIONS							Type	Insert	SPARE PARTS	
	$\varnothing D$	$\varnothing d_{H7}$	$\varnothing d2$	D1	H	Z	L			Screw	Wrench
444-04001	32	16	38	39	40	3	18	A	OFMT OFEX OFCW OFCT 05T3..	M4x10 TR2	TB15 
444-04119	40	16	38	47	40	3	18	B			
444-04120	50	22	48	57	40	4	20	B			
444-04121	63	22	48	70	40	5	20	B			
444-04122	80	27	58	87	50	6	22	B			
444-04123	100	32	78	107	50	7	25	B			
444-04224	125	40	88	132	63	8	29	C			



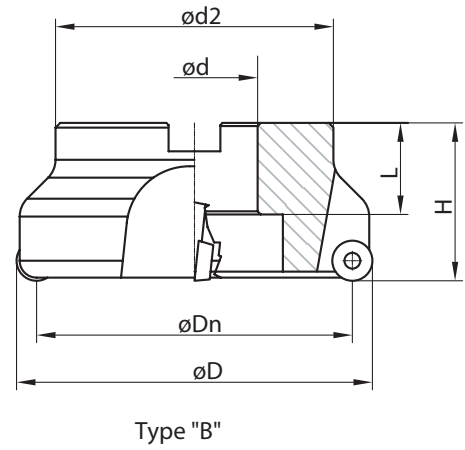
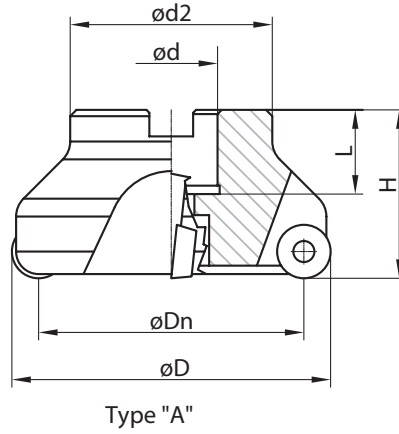
Inserto
Insert
Wendeplatte




OFCW
OFMT
OFEX
05T3..

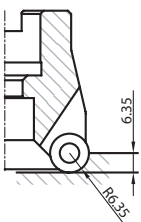
a	s	d
12.7	3.77	4.5

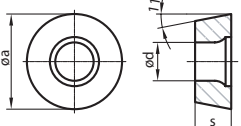
**PLANFRÄSER
FACE MILLING CUTTERS
FRAISES Á SURFACE
FRESE PER SPIANATURA**



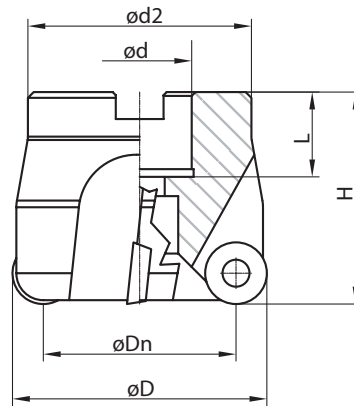
Radial angle $\gamma_f=0^\circ$ Axial angle $\gamma_p=6^\circ$

CODE	DIMENSIONS							Type	Insert	SPARE PARTS	
	ϕD	ϕd_{H7}	$\phi d2$	ϕDn	H	Z	L			Screw	Wrench
444-05147	42	16	38	30	40	3	18	A	RPHT RPMW RPMT 1204..	M4x10 TR2	TB15 
444-05148	52	22	48	40	50	3	20	A			
444-05149	52	22	48	40	50	4	20	A			
444-05150	63	22	48	51	50	5	20	A			
444-05151	66	27	58	54	50	4	22	A			
444-05152	66	27	58	54	50	5	22	A			
444-05153	75	22	48	63	40	5	20	A			
444-05154	92	27	58	80	50	6	22	A			
444-05228	112	32	78	100	50	7	29	B			

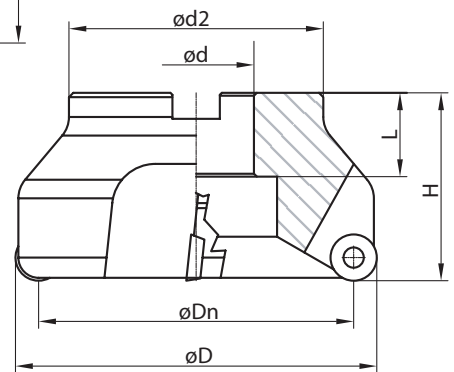


Inserto Insert Wendeplatte		RPMT 120400	a	s	d
			12.7	4.76	5.2

**PLANFRÄSER
FACE MILLING CUTTERS
FRAISES Á SURFACE
FRESE PER SPIANATURA**



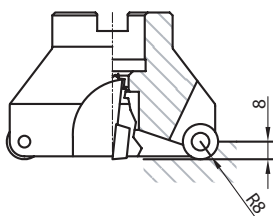
Type "A"



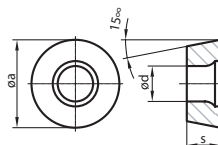
Type "B"

Radial angle $\gamma_f = -(0 \sim 5)^\circ$ Axial angle $\gamma_p = 6^\circ$

CODE	DIMENSIONS							Type	Insert	SPARE PARTS	
	ϕD	ϕd_{H7}	$\phi d2$	ϕDn	H	Z	L			Screw	Wrench
444-05155	66	27	58	50	55	3	22	A	RDHT RDMW RDMT 1604..	M5x13 TR24	TB20
444-05156	66	27	58	50	55	4	22	A			
444-05157	80	27	58	64	55	4	22	A			
444-05158	80	27	58	64	55	5	22	A			
444-05226	100	32	78	84	60	6	26	B			
444-05227	125	40	88	109	65	7	29	B			

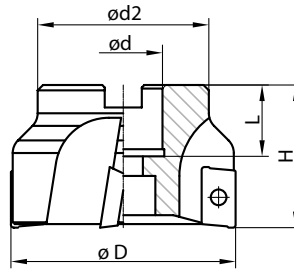


Inserto
Insert
Wendeplatte

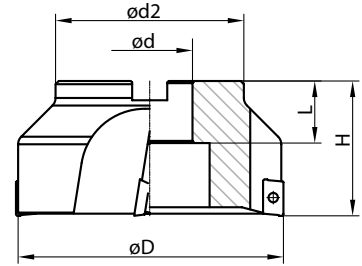


RDHT 1604...	a	s	d
RDMW 1604...	16	4.76	5.6
RDMT 1604...			

ECKFRÄSER (90°)
SHOULDER MILLING CUTTERES (90°)
FRAISES Á DRESSER (90°)
FRESE PER SPALLAMENTI (90°)



Type "A"



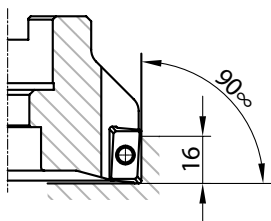
Type "B"

Major cutting edge angle $\kappa=90^\circ$ Radial angle $\gamma_f=-(3\sim 10)$ Axial angle $\gamma_p=+9$

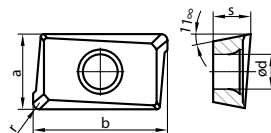
REDUCED STEP	CODE	DIMENSIONS					Type	Insert	SPARE PARTS	
		$\varnothing D$	$\varnothing d_{H7}$	$\varnothing d2$	H	Z			L	Screw
	444-01145	40	16	38	40	3	18	A	APFT APHT APKT 1604...	M4x10 TR2
444-01146	50	22	48	40	3	20	A			
444-01147	63	22	48	40	4	20	A			
444-01148	80	27	58	50	5	22	A			
444-01208	100	32	78	50	6	26	B			

STANDARD STEP	CODE	DIMENSIONS					Type	Insert	SPARE PARTS	
		$\varnothing D$	$\varnothing d_{H7}$	$\varnothing d2$	H	Z			L	Screw
	444-01149	50	22	48	40	4	20	A	APFT APHT APKT 1604...	M4x10 TR2
444-01150	63	22	48	40	5	20	A			
444-01151	80	27	58	50	6	22	A			
444-01209	100	32	78	50	7	26	B			
444-01210	125	40	88	63	8	29	B			

OVERSIZE STEP	CODE	DIMENSIONS					Type	Insert	SPARE PARTS	
		$\varnothing D$	$\varnothing d_{H7}$	$\varnothing d2$	H	Z			L	Screw
	444-01152	40	16	38	40	4	18	A	APFT APHT APKT 1604...	M4x10 TR2
444-01153	50	22	48	40	5	20	A			
444-01154	63	22	48	40	6	20	A			
444-01155	80	27	58	50	7	22	A			
444-01211	100	32	78	50	8	26	B			
444-01212	125	40	88	63	9	29	B			



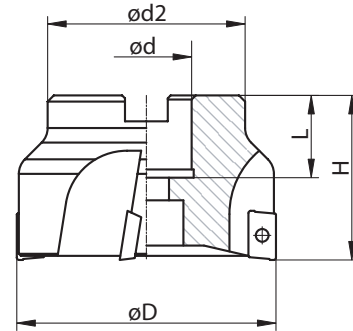
Inserto
Insert
Wendeplatte




APFT 1604..
APKT 1604..
APHT 1604..

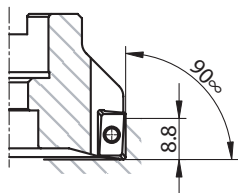
a	b	s	d	r
9.52	17	4.76	4.4	0.8

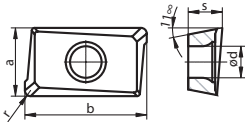
ECKFRÄSER (90°)
SHOULDER MILLING CUTTERES (90°)
FRAISES Á DRESSER (90°)
FRESE PER SPALLAMENTI (90°)



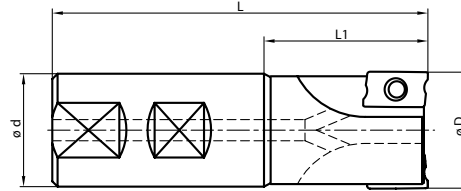
Major cutting edge angle $\kappa=90^\circ$ Radial angle $\gamma_f=-(3\sim6)$ Axial angle $\gamma_p=+9$

CODE	DIMENSIONS						Insert	SPARE PARTS	
	Ø D	Ø d H7	Ø d2	H	Z	L		Screw	Wrench
444-01156	40	16	38	40	5	18	APHT APHX APKT 1003...	M2.5x6.5 TR23	TB8 
444-01157	50	22	48	40	6	20			
444-01158	63	22	48	40	7	20			
444-01159	80	27	58	50	9	22			




Inserto Insert Wendepatte		APHT 1003..	a	b	s	d	r
		APHX 1003.. APKT 1003..	6.7	10.8	3.55	2.8	0.5

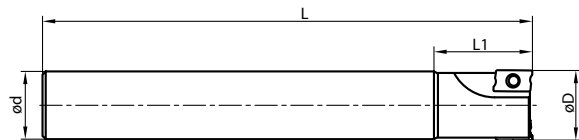
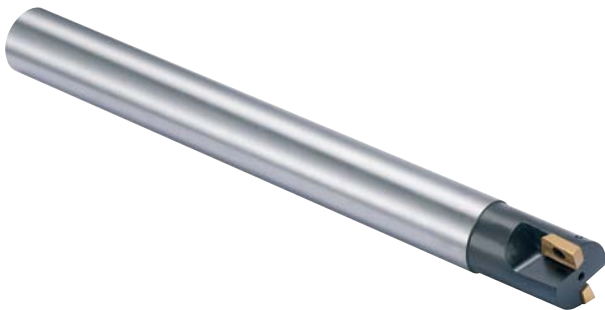
ECKFRÄSER (90°) MIT WELDON SHAFT
SHOULDER MILLING CUTTERS (90°) WITH WELDON SHANK
FRAISES À DRESSER (90°) AVEC QUEUE WELDON
FRESE PER SPALLAMENTI (90°) CON ATTACCO WELDON




Major cutting edge angle $\kappa=90^\circ$

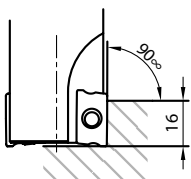
CODE	DIMENSIONS					Insert	SPARE PARTS	
	$\varnothing D$	$\varnothing d$ H6	L	L1	Z		Screw	Wrench
454-01243	25	25	100	44	2	APFT APKT APHT 1604..	M4x8.2 TR26	TB15 
454-01244	32	32	115	45	3			
454-01245	40	32	115	45	4			

ECKFRÄSER (90°) MIT ZYLINDRICAL SHAFT
SHOULDER MILLING CUTTERS (90°) WITH CYLINDRICAL SHANK
FRAISES À DRESSER (90°) AVEC QUEUE CYLINDRIQUE
FRESE PER SPALLAMENTI (90°) CON ATTACCO CILINDRICO

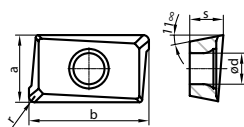


Major cutting edge angle $\kappa=90^\circ$

CODE	DIMENSIONS					Insert	SPARE PARTS	
	$\varnothing D$	$\varnothing d$ H6	L	L1	Z		Screw	Wrench
454-01122	22	20	200	60	2	APFT APKT APHT 1604..	M4x8.2 TR26	TB15 
454-01123	25	25	250	40	2			
454-01124	32	25	250	40	3			



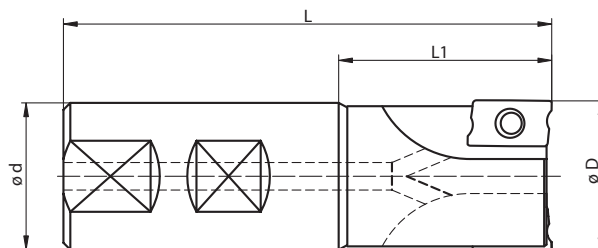
Inserto
Insert
Wendepatte




APFT 1604..
APKT 1604..
APHT 1604..

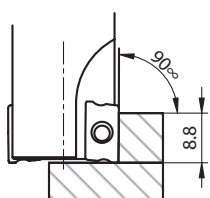
a	b	s	d	r
9.52	17	4.76	4.4	0.8

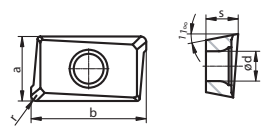
ECKFRÄSER (90°) MIT WELDON SHAFT
SHOULDER MILLING CUTTERS (90°) WITH WELDON SHANK
FRAISES À DRESSER (90°) AVEC QUEUE WELDON
FRESE PER SPALLAMENTI (90°) CON ATTACCO WELDON



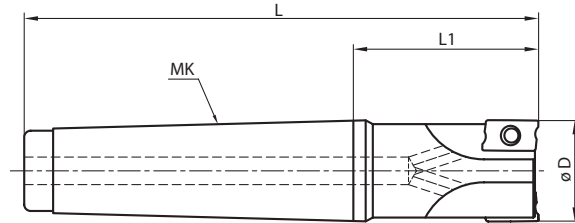
Major cutting edge angle $\kappa=90^\circ$

CODE	DIMENSIONS					Insert	SPARE PARTS	
	Ø D	Ø d H6	L	L1	Z		Screw	Wrench
454-01246	10	16	80	20	1	APHT APHX APKT 1003..	M2.5x6.5 TR23	TB8 
454-01247	12	16	80	20	1			
454-01248	16	16	85	25	2			
454-01249	20	20	90	25	3			
454-01250	25	25	96	30	4			
454-01251	32	25	96	30	4			







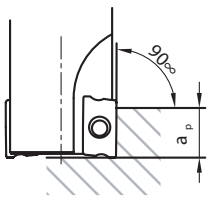
Inserto Insert Wendepatte		APHT 1003.. APHX 1003.. APKT 1003..	a	b	s	d	r
			6.7	10.8	3.55	2.8	0.5

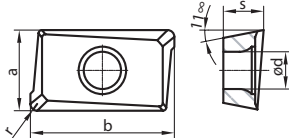
ECKFRÄSER (90°) MIT MORSE KEGEL
SHOULDER MILLING CUTTERS (90°) WITH MORSE TAPER
FRAISES À DRESSER (90°) AVEC QUEUE CÔNE MORSE
FRESE PER SPALLAMENTI (90°) CON ATTACCO CONO MORSE



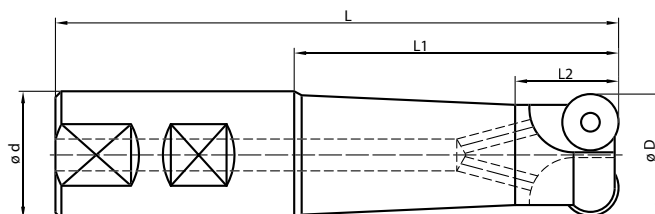
Major cutting edge angle $\kappa=90^\circ$

CODE	DIMENSIONS					Insert	SPARE PARTS	
	Ø D	MK	L	L1	Z		Screw	Wrench
454-01517	16	2	100	36	2	AP..1003	M2.5x6.5 TR23	TB8
454-01518	20	3	120	39	3	..		
454-01519	25	3	125	44	2	AP..1604..	M4x8.2 TR26	TB15
454-01520	32	3	125	44	3			
454-01521	40	4	155	52	4			



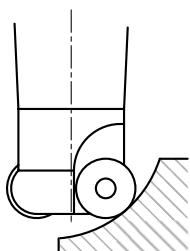
Inserto Insert Wendeplatte		a	b	s	d	r	ap
		APKT 1003.. APHT 1003.. APHX 1003..	6.7	10.8	3.55	2.8	0.5
APKT 1604.. APFT 1604.. APHT 1604.. APHX 1604..	9.52	17	4.76	4.4	0.8	16	

**KOPIERFRÄSER MIT WELDON SHAFT
COPY MILLING CUTTERS WITH WELDON SHANK
FRAISES A COPIER AVEC QUEUE WELDON
FRESE A COPIARE CON ATTACCO WELDON**



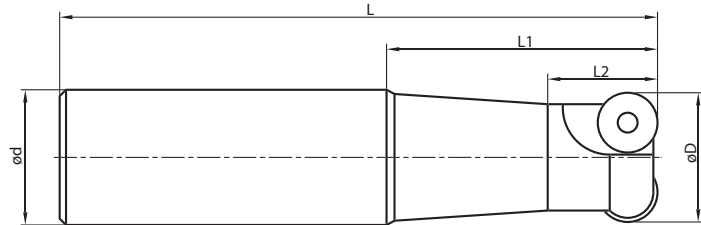
Radial angle $\gamma_f=0$ Axial angle $\gamma_p=0$

CODE	DIMENSIONS						Insert Type	SPARE PARTS	
	Ø D	Ø d H6	L	L1	L2	Z		Screw	Wrench
454-05224	12	16	88	40	20	2	RDHX 07T1 MOT	M2.2x5 TR6	TB7
454-05225	12	16	108	60	20	2			
454-05226	12	16	128	80	20	2			
454-05227	15	16	88	40	40	2	RDHX 0702 MOT	M2.5x6 TR23	TB8
454-05228	15	16	108	60	40	2			
454-05229	15	20	130	80	40	2			
454-05230	15	20	150	100	40	2	RDHX 1003 MOT	M4x10 TR2	TB15
454-05231	20	20	90	40	40	2			
454-05232	20	20	110	60	40	2			
454-05233	20	25	135	80	40	2			
454-05234	20	25	155	100	40	2			



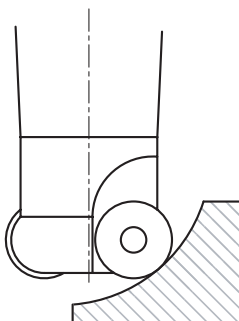
Inserto Insert Wendeplatte		a	s	d
		RDHX 07T1 MOT	7	1.98
RDHX 0702 MOT	7	2.38	2.7	
RDHX 1003 MOT	10	3.18	3.9	

**KOPIERFRÄSER MIT ZYLINDRICAL SHAFT
COPY MILLING CUTTERS WITH CYLINDRICAL SHANK
FRAISES A COPIER AVEC QUEUE CYLINDRIQUE
FRESE A COPIARE CON ATTACCO CILINDRICO**



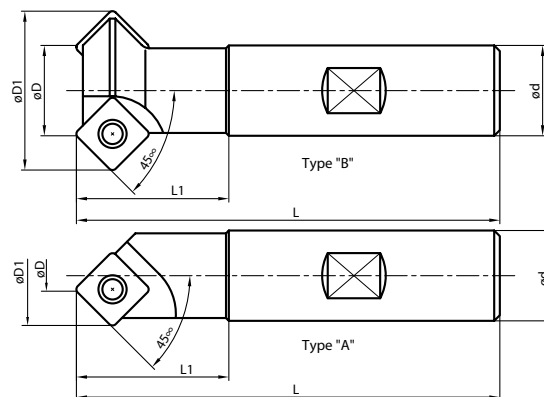
Radial angle $\gamma_f=0$ Axial angle $\gamma_p=0$

CODE	DIMENSIONS						Insert Type	SPARE PARTS	
	Ø D	Ø d H6	L	L1	L2	Z		Screw	Wrench
454-05127	12	16	140	40	20	2	RDHX 07T1 MOT	M2.2x5 TR6	TB7
454-05128	12	16	160	60	20	2			
454-05129	12	16	180	80	20	2			
454-05130	15	16	140	40	40	2	RDHX 0702 MOT	M2.5x6 TR23	TB8
454-05131	15	16	160	60	40	2			
454-05132	15	20	180	80	40	2			
454-05133	15	20	200	100	40	2	RDHX 1003 MOT	M4x10 TR2	TB15
454-05134	20	20	140	40	40	2			
454-05135	20	20	160	60	60	2			
454-05136	20	25	180	80	60	2			
454-05137	20	25	200	100	60	2	RDHX 12T3 MOT	M3.5x10 TR14	TB15
454-05138	25	25	200	100	80	2			
454-05139	25	25	220	120	80	2			
454-05140	25	32	230	130	80	2			
454-05141	25	32	260	160	80	2			





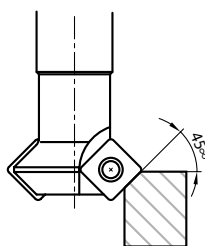
Inserto Insert Wendepatte	ØD	Ød	s	a	s	d
				RDHX 07T1 MOT	7	1.98
RDHX 0702 MOT	7	2.38	2.7			
RDHX 1003 MOT	10	3.18	3.9			
RDHX 12T3 MOT	12	3.97	3.9			

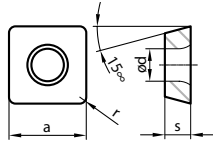
FRÄSER ZUM SPITZENSENKEN
MILLING CUTTERS FOR CHAMFERING
FRAISES À CHANFREINER
FRESE PER SMUSSI E SVASATURE



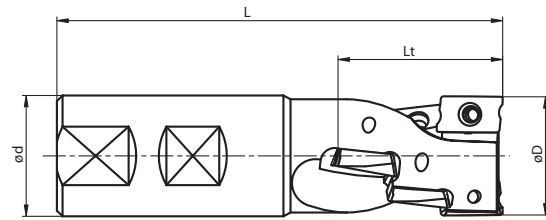
Major cutting edge angle $\kappa=45^\circ$ Radial angle $\gamma_f=0$ Axial angle $\gamma_p=0$

CODE	DIMENSIONS						Type	Insert	SPARE PARTS	
	$\varnothing D$	$\varnothing d_{H6}$	D1	L	L1	Z			Screw	Wrench
454-13207	7	16	19.8	75	27	1	A	SDMW SDLT SDKA 0903...	M4x10 TR2 	TB15 
454-13208	16	16	28.8	75	27	2	B			
454-13209	20	20	32.8	82	37	2	B			
454-13210	25	25	37.8	96	40	2	B			
454-13211	32	32	44.8	100	40	3	B			



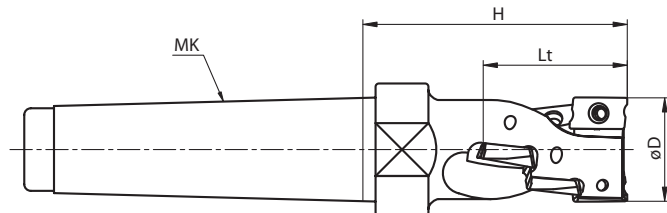
Inserto Insert Wendeplatte		SDCW 0903.. SDLT 0903.. SDKA 0903..			
		a	s	d	r
		9.52	3.18	4.5	0.8

**SCHAFTSCHUPPFRÄSER (IGELFRÄSER) MIT WELDON SHAF
HELICAL END MILLS (PORQUIPINE) WITH WELDON SHANK
FRAISES EN BOIT HELICOIDAL AVEC QUEUE WELDON
FRESE A RICCIO CON ATTACCO WELDON**



CODE	DIMENSIONS					Insert		SPARE PARTS	
	Ø D	Ø d H6	L	Lt	Z	n°	Type	Screw	Wrench
454-07205	25	25	105	29	1	2	APFT APKT APHT 1604...	M4x8.2 TR26	TB15
454-07206	32	32	115	44	2	6			
454-07207	40	32	130	58	2	8			

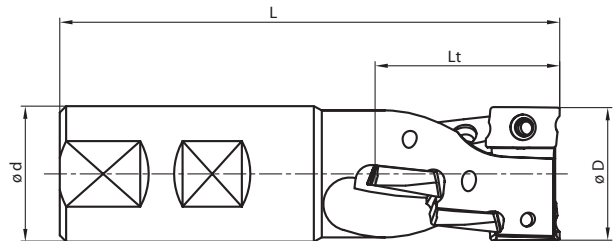
**SCHAFTSCHUPPFRÄSER (IGELFRÄSER) MIT MORSE KEGEL
HELICAL END MILLS (PORQUIPINE) WITH MORSE TAPER
FRAISES EN BOIT HELICOIDAL AVEC QUEUE CÔNE MORSE
FRESE A RICCIO CON ATTACCO CONO MORSE**




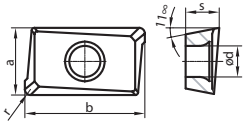
CODE	DIMENSIONS					Insert		SPARE PARTS	
	Ø D	MK	H	Lt	Z	n°	Type	Screw	Wrench
454-07508	25	3	45	29	1	2	APFT APKT APHT 1604...	M4x8.2 TR26	TB15
454-07509	32	4	80	44	2	6			
454-07510	40	4	90	58	2	8			

Inserto Insert Wendeplatte		APFT 1604..	a	b	s	D	r
		APKT 1604.. APHT 1604..	9.52	17	4.76	4.4	0.8

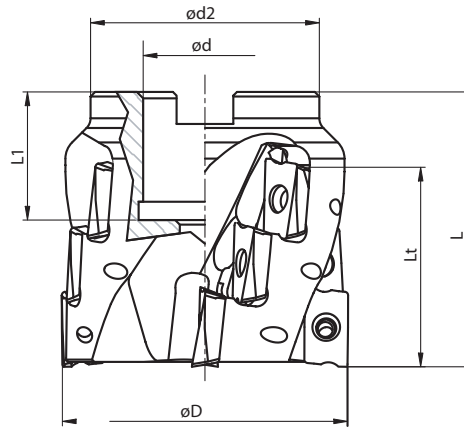
**SCHAFTSCHUPPFRÄSER (IGELFRÄSER) MIT WELDON SHAF
HELICAL END MILLS (PORQUIPINE) WITH WELDON SHANK
FRAISES EN BOIT HELICOIDAL AVEC QUEUE WELDON
FRESE A RICCIO CON ATTACCO WELDON**



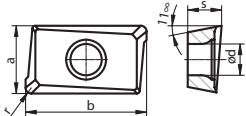
CODE	DIMENSIONS					Insert		SPARE PARTS	
	Ø D	Ø d H6	L	Lt	Z	n°	Type	Screw	Wrench
454-07208	20	20	86	28	1	4	APHT APHX APKT 1003..	M2.5x6.5 TR23	TB8 
454-07209	25	25	100	36	2	8			
454-07210	32	32	120	45	2	12			
454-07211	40	32	130	54	2	14			

Inserto Insert Wendepatte		APHT 1003.. APHX 1003.. APKT 1003..				
		a	b	s	d	r
		6.7	10.8	3.55	2.8	0.5

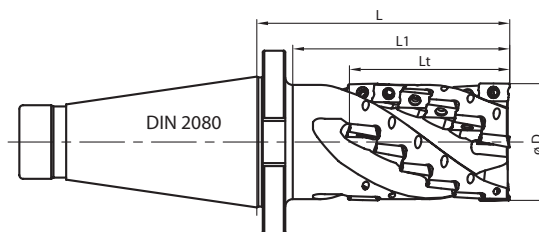
**SCHAFTSCHUPPFRÄSER (IGELFRÄSER)
HELICAL END MILLS (PORQUIPINE)
FRAISES EN BOIT HELICOIDAL
FRESE A RICCIO**





CODE	DIMENSIONS							Insert		SPARE PARTS	
	Ø D	Ø d H7	Ø d2	L	Lt	L1	Z	n°	Type	Screw	Wrench
444-07109	50	27	48	50	30	22	3	6	APFT APKT APHT 1604...	M4x10 TR2 	TB15 
444-07110	63	27	58	60	44	22	4	12			
444-07111	80	32	78	60	44	25	5	15			
444-07112	100	40	88	60	44	30	6	18			

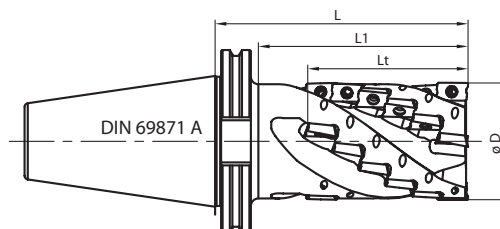
Inserto Insert Wendeplatte		<table border="1"> <tr> <td>APFT 1604..</td> <td>a</td> <td>b</td> <td>s</td> <td>d</td> <td>r</td> </tr> <tr> <td>APKT 1604..</td> <td>9.52</td> <td>17</td> <td>4.76</td> <td>4.4</td> <td>0.8</td> </tr> <tr> <td>APHT 1604..</td> <td></td> <td></td> <td></td> <td></td> <td></td> </tr> </table>					APFT 1604..	a	b	s	d	r	APKT 1604..	9.52	17	4.76	4.4	0.8	APHT 1604..					
		APFT 1604..	a	b	s	d	r																	
APKT 1604..	9.52	17	4.76	4.4	0.8																			
APHT 1604..																								

**SCHAFTSCHUPPFRÄSER (IGELFRÄSER)
HELICAL END MILLS (PORQUIPINE)
FRAISES EN BOIT HELICOIDAL
FRESE A RICCIO**




DIN 2080

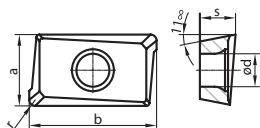
CODE	DIMENSIONS						Insert		SPARE PARTS	
	Ø D	ISO	L	L1	Lt	Z	n°	Type	Screw	Wrench
454-07613	40	40	86	70	58	2	8	APFT APKT APHT 1604...	M4x10 TR2 	TC15 
454-07614	50	50	123	100	70	3	15			
454-07615	63	50	133	110	84	4	24			



DIN 69871 A

CODE	DIMENSIONS						Insert		SPARE PARTS	
	Ø D	ISO	L	L1	Lt	Z	n°	Type	Screw	Wrench
454-07708	40	40	95	70	58	2	8	APFT APKT APHT 1604..	M4x10 TR2 	TC15 
454-07709	50	50	130	105	70	3	15			
454-07710	63	50	135	115	84	4	24			

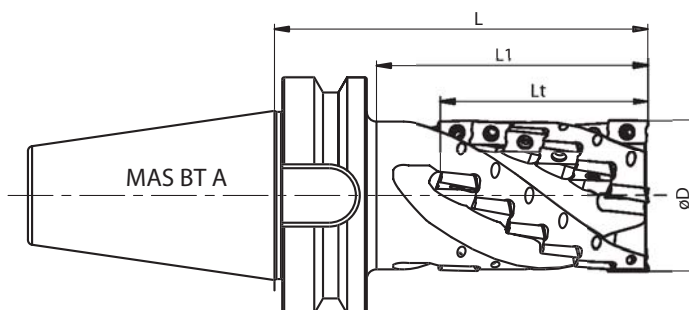
Inserto
Insert
Wendeplatte




APFT 1604..
APKT 1604..
APHT 1604..

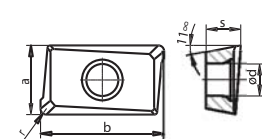
a	b	s	d	r
9.52	17	4.76	4.4	0.8

**SCHAFTSCHUPPFRÄSER (IGELFRÄSER)
HELICAL END MILLS (PORQUIPINE)
FRAISES EN BOIT HELICOIDAL
FRESE A RICCIO**

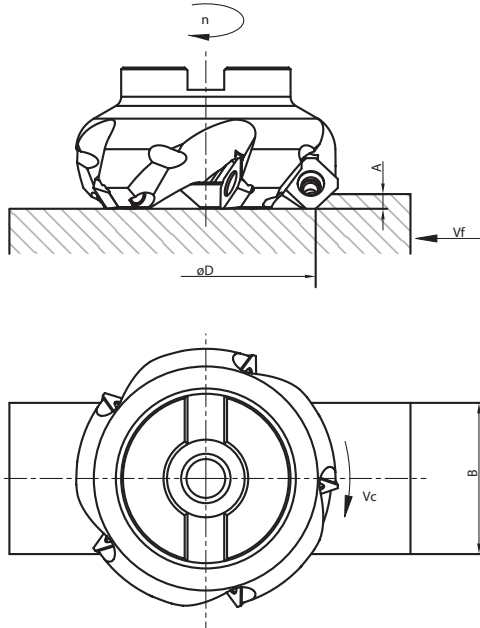


MAS BT A

CODE	DIMENSIONS						Insert		SPARE PARTS	
	Ø D	ISO	L	L1	Lt	Z	n°	Type	Screw	Wrench
454-07808	40	40	105	70	58	2	8	APFT APKT APHT 1604...	M4x10 TR2	TC15 
454-07809	50	50	145	100	70	3	15			
454-07810	63	50	150	115	84	4	24			

Inserto Insert Wendeplatte		APFT 1604.. APKT 1604.. APHT 1604..				
		a	b	s	d	r
		9.52	17	4.76	4.4	0.8

TERMINOLOGY AND FORMULAS

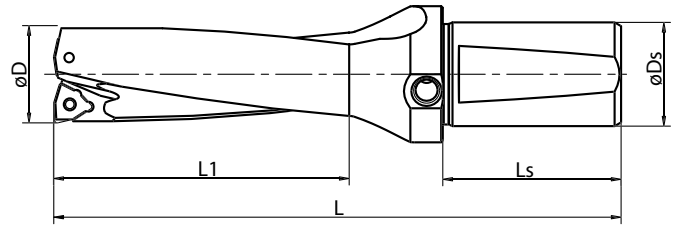


$$V_c = \frac{3,14 \cdot D \cdot n}{1000} \quad [\text{m/min.}]$$

$$V_f = n \cdot Z \cdot f_z \quad [\text{m/min.}]$$

$$V = \frac{B \cdot A \cdot V_f}{1000} \quad [\text{cm}^3/\text{min.}]$$

<p>A Profondità di taglio assiale [mm]</p> <p>B Larghezza della fresatura [mm]</p> <p>V_c Velocità di taglio [m/min.]</p> <p>D Diametro fresa [mm]</p> <p>n Numero di giri al min' [1/min.]</p> <p>f_z Avanzamento al dente [mm]</p> <p>Z Numero di denti</p> <p>V_f Avanzamento tavola [mm/min.]</p> <p>V Volume del truciolo asportato [cm³/min.]</p>	<p>A Abspanvolum [mm]</p> <p>B Vorschub ja nach Drehzahl [mm]</p> <p>V_c Schnittgeschwindigkeit [m/min.]</p> <p>D Zahnteilung Fraeser [mm]</p> <p>n Drehzahl-min' [1/min.]</p> <p>f_z Vorschub je nach Zähnezahl [mm]</p> <p>Z Freaser Zähneanzahl</p> <p>V_f Tischvorschub [mm/min.]</p> <p>V Abspanvolum [cm³/min.]</p>
<p>A Depth of axial cutting-parting [mm]</p> <p>B Cutting-parting width [mm]</p> <p>V_c Cutting speed [m/min.]</p> <p>D Diameter milling [mm]</p> <p>n Turns number-min' [1/min.]</p> <p>f_z Toolh feed [mm]</p> <p>Z Teelh number</p> <p>V_f Bench-table feed [mm/min.]</p> <p>V Chip's removed volume [cm³/min.]</p>	<p>A Profondeur de coupe axial [mm]</p> <p>B Largeur de coupe [mm]</p> <p>V_c Vitesse de coupe [m/min.]</p> <p>D Diamètre fraise [mm]</p> <p>n Nombre des tours-min' [1/min.]</p> <p>f_z Avancement dent [mm]</p> <p>Z Nombre des dents</p> <p>V_f Avancement table [mm/min.]</p> <p>V Volume de copeau enlev_ [cm³/min.]</p>



CODE	DIMENSIONS					Insert	SPARE PARTS	
	D	L1	Ds (h6)	Ls	L		Screw	Wrench
554-11001	16	48	20	43	116	WCMT 030208	TR27 M2.5x6.5	TB7
554-11002	17	51	20	43	119			
554-11036	17.5	52.5	20	43	119			
554-11003	18	54	20	43	122			
554-11004	19	57	20	43	125			
554-11005	20	60	20	43	128	WCMT 040208	TR27 M2.5x6.5	TB7
554-11006	21	63	25	50	138			
554-11007	22	66	25	50	141			
554-11008	23	69	25	50	144			
554-11009	24	72	25	50	147			
554-11010	25	75	25	50	150	WCMT 050308	TR28 M3x7.2	TB9
554-11011	26	78	32	55	158			
554-11012	27	81	32	55	161			
554-11013	28	84	32	55	164			
554-11014	29	87	32	55	167			
554-11015	30	90	32	55	175	WCMT 06T308	TR29 M3.5x8	TB15
554-11016	31	93	32	55	178			
554-11017	32	96	32	55	181			
554-11018	33	99	32	55	184			
554-11019	34	102	32	55	187			
554-11020	35	105	32	55	190			
554-11021	36	108	32	55	193			
554-11022	37	111	32	55	196			
554-11023	38	114	32	55	199			
554-11024	39	117	32	55	202			
554-11025	40	120	32	55	205			
554-11026	41	123	32	55	208			
554-11027	42	126	40	65	221			
554-11028	43	129	40	65	224			
554-11029	44	132	40	65	227			
554-11030	45	135	40	65	230			
554-11031	46	138	40	65	233			
554-11032	47	141	40	65	236			
554-11033	48	144	40	65	239			
554-11034	49	147	40	65	247			
554-11035	50	150	40	65	250			

Inserto Insert Wendeplatte		a	s	d
		WCMT 030208	5.56	2.38
WCMT 040208	6.35	2.38	3	
WCMT 050308	7.94	3.18	3.4	
WCMT 06T308	9.52	3.97	4	
WCMT 080408	12.7	4.76	4.3	

Le dimensioni e le misure riportate su questo catalogo possono essere variate in qualsiasi momento senza obbligo di darne notizia.

Tool dimensions and tool sizes on this catalogue could be changed in every moment without duty to advice customer.

Les dimensions et les mesures sur ce catalogue peuvent etre changées á n'importe quel moment sans l'obligation de renseigner les clients.

Die in diesem Katalog angegebenen Abmessungen können ohne Voranzeige an den Kunden geändert werden.