

**SCHRUMPFUTTER**  
**SHRINK FIT CHUCKS**  
**MANDRINS DE FRETTAGE**  
**MANDRINI A CALETTAMENTO**





### **SCHRUMPFPROGRAMM - Die Vorteile der Schrumpftechnik**

- Ideale zur HSC-Bearbeitung
- Sehr schnelle Montage und Demontage des Werkzeuges in der Aufnahme
  - Sehr hohe Präzision: Rundlaufgenauigkeit bis 0,003
- Höchste radial- und axiale Halterkraft, auch bei sehr hohen Geschwindigkeit
- Übertragbares Drehmoment wesentlich höher als bei allen anderen Systemen
- Vielvalte Anwendungsmöglichkeiten: Für Hartmetall und HSS Werkzeuge
  - Optimale Oberflächengüte
- Hohe Lebensdauer des Werkzeuges und der Aufnahme

### **UNSERE SCHRUMPFUTTER**

- Aus hochlegierter Sonderstahl, mit sehr hoher Dehnrate und Hitzebeständigkeit, spezifisch für Induktion
  - Höchste Rundlaufgenauigkeit, max. Rundlauffehler 0.003
- Für HSC Bearbeitungen, feingewuchtet bis 15000 U/min in Klasse G2.5
  - Für HSS und HM Werkzeuge (Schaft des Werkzeuges muß h6 sein)
- Sehr umfangreiches Programm: von MAS BT30/HSK32 bis SK50/HSK100



### **SHRINK TO FIT - Advantages of the Shrink-To.Fit Technology**

- Particularly suitable for High Speed Machining
- Very quick assembling of the tools into the toolholders
- Extremely high precision, runout accuracy under the 0,003
- High radial and axial clamping force also by a very high speed
- The transferable torque is much higher than any other system
- Wide spread of applications: for HSS and carbide tools
  - Excellent surface's quality
- Longer cutting edge's and holder's life

### **OUR SHRINK TO FIT CHUCKS**

- High-alloy steel, very high temperature resistant, specific for Induction.
  - High runout accuracy, max error 0.003
- For High Speed Machining, fine balanced up to 15000 rpm in class G2.5
  - For HSS und carbide tools (with shank in h6 )
- Very wide range: from MAS BT30/HSK32 to SK50/HSK100



### **FRETTAGE - Les avantages du système**

- Idéal pour travailler à haute vitesse.
  - Montage et démontage d'outil rapide
- Grande précision, couplage d'outil et porte outil inférieur à 0,003
- Avec grande vitesse on a une grande force de serrage soit axial que radial
  - Couple de serrage supérieur à tous les autres systèmes
  - Vaste possibilité d'usage: pour outil en carbure et en HSS
    - Excellent finissage superficiel
  - Supérieure dureté d'outil et du mandrin

### **NOS PORTE-OUTILS DE FRETTAGE**

- En acier spécial pour travailler à hautes températures, spécifique pour le frettage à induction.
  - Maximum concentricité, erreur de coaxialité maximum: 0.003
- Pour haute vitesse, ils sont équilibrés à 15000 T/min en classe G2.5
- Pour outils en carbure et en HSS avec tolérance de la queue h6
  - Large gamme: de Mas BT 30/HSK32 à ISO50/HSK100



### **CALETTAMENTO A CALDO - I vantaggi del sistema**

- Ideale per le lavorazioni ad alta velocità
  - Rapido inserimento ed estrazione dell'utensile
- Altissima precisione, accoppiamento utensile portautensile con coassialità inferiore a 0,003
- Elevata forza di bloccaggio assiale e radiale anche ad altissime velocità
  - Momento torcente di molto superiore a qualsiasi altro sistema
- Vasta possibilità d'impiego: per utensili in metallo duro e in HSS
  - Ottima finitura superficiale
- Maggiore durata dell'utensile e del mandrino

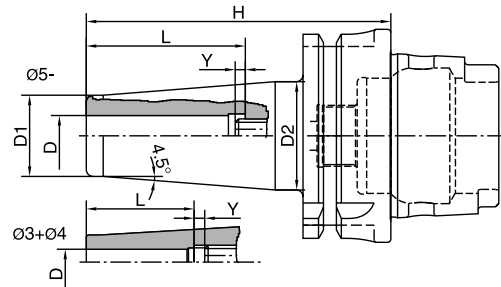
### **I NOSTRI PORTAUTENSILI A CALDO**

- In acciaio speciale per lavorazione ad elevate temperature, specifico per il calettamento ad induzione
  - Massima concentricità, errore di coassialità massimo: 0.003
  - Per alta velocità, equilibrati a 15000 rpm in classe G2.5
  - Per utensili in metallo duro e HSS con tolleranza del gambo h6
  - Vastissima gamma: da Mas BT 30/HSK32 a ISO50/HSK100

SCHRUMPFUTTER HSK 32 DIN 69893 Form A • SHRINK FIT CHUCKS HSK 32 DIN69893 TYPE A MANDRINS DE FRETTAGE TYPE HSK 32 DIN 69893 A • MANDRINI A CALETTAMENTO HSK 32 DIN 69893 tipo A		PAG. 172
SCHRUMPFUTTER HSK 32 DIN 69893 Form E • SHRINK FIT CHUCKS HSK 32 DIN69893 TYPE E MANDRINS DE FRETTAGE TYPE HSK 32 DIN 69893 E • MANDRINI A CALETTAMENTO HSK 32 DIN 69893 tipo E		PAG. 172
SCHRUMPFUTTER HSK 40 DIN 69893 Form A • SHRINK FIT CHUCKS HSK 40 DIN69893 TYPE A MANDRINS DE FRETTAGE TYPE HSK 40 DIN 69893 A • MANDRINI A CALETTAMENTO HSK 40 DIN 69893 tipo A		PAG. 173
SCHRUMPFUTTER HSK 40 DIN 69893 Form E • SHRINK FIT CHUCKS HSK 40 DIN69893 TYPE E MANDRINS DE FRETTAGE TYPE HSK 40 DIN 69893 E • MANDRINI A CALETTAMENTO HSK 40 DIN 69893 tipo E		PAG. 173
SCHRUMPFUTTER HSK 50 DIN 69893 Form A • SHRINK FIT CHUCKS HSK 50 DIN69893 TYPE A MANDRINS DE FRETTAGE TYPE HSK 50 DIN 69893 A • MANDRINI A CALETTAMENTO HSK 50 DIN 69893 tipo A		PAG. 174
SCHRUMPFUTTER HSK 50 DIN 69893 Form E • SHRINK FIT CHUCKS HSK 50 DIN69893 TYPE E MANDRINS DE FRETTAGE TYPE HSK 50 DIN 69893 E • MANDRINI A CALETTAMENTO HSK 50 DIN 69893 tipo E		PAG. 175
SCHRUMPFUTTER HSK 63 DIN 69893 Form A • SHRINK FIT CHUCKS HSK 63 DIN69893 TYPE A MANDRINS DE FRETTAGE TYPE HSK 63 DIN 69893 A • MANDRINI A CALETTAMENTO HSK 63 DIN 69893 tipo A		PAG. 176
SCHRUMPFUTTER HSK 63 DIN 69893 Form E • SHRINK FIT CHUCKS HSK 63 DIN69893 TYPE E MANDRINS DE FRETTAGE TYPE HSK 63 DIN 69893 E • MANDRINI A CALETTAMENTO HSK 63 DIN 69893 tipo E		PAG. 177
SCHRUMPFUTTER HSK 100 DIN 69893 Form A • SHRINK FIT CHUCKS HSK 100 DIN69893 TYPE A MANDRINS DE FRETTAGE TYPE HSK 100 DIN 69893 A • MANDRINI A CALETTAMENTO HSK 100 DIN 69893 tipo A		PAG. 178
SCHRUMPFUTTER ISO 30 DIN 69871 AD • SHRINK FIT CHUCKS ISO 30 DIN 69871 AD MANDRINS DE FRETTAGE TYPE ISO 30 DIN 69871 AD • MANDRINI A CALETTAMENTO ISO 30 DIN 69871 AD		PAG. 179
SCHRUMPFUTTER MAS BT-30 Form AD • SHRINK FIT CHUCKS MAS BT-30 type AD MANDRINS DE FRETTAGE TYPE MAS BT-30 AD • MANDRINI A CALETTAMENTO MAS BT-30 tipo AD		PAG. 179
SCHRUMPFUTTER ISO 40 DIN 69871 AD/B • SHRINK FIT CHUCKS ISO 40 DIN 69871 AD/B MANDRINS DE FRETTAGE TYPE ISO 40 DIN 69871 AD/B • MANDRINI A CALETTAMENTO ISO 40 DIN 69871 AD/B		PAG. 180
SCHRUMPFUTTER MAS BT-40 Form AD/B • SHRINK FIT CHUCKS MAS BT-40 type AD/B MANDRINS DE FRETTAGE TYPE MAS BT-40 type AD/B • MANDRINI A CALETTAMENTO MAS BT-40 tipo AD/B		PAG. 181
SCHRUMPFUTTER ISO 50 DIN 69871 AD/B • SHRINK FIT CHUCKS ISO 50 DIN 69871 AD/B MANDRINS DE FRETTAGE TYPE ISO 50 DIN 69871 AD/B • MANDRINI A CALETTAMENTO ISO 50 DIN 69871 AD/B		PAG. 182
SCHRUMPFUTTER MAS BT-50 Form AD/B • SHRINK FIT CHUCKS MAS BT-50 type AD/B MANDRINS DE FRETTAGE TYPE MAS BT-50 AD/B • MANDRINI A CALETTAMENTO MAS BT-50 tipo AD/B		PAG. 183
SCHRUMPFVERLÄNGERUNGEN • SHRINKING EXTENSIONS RALLONGES DE FRETTAGE • PROLUNGHE PER CALETTAMENTO		PAG. 184
INDUKTIV-SCHRUMPFANLAGE K-ISG 3200 • INDUCTIVE SHRINK TO FIT UNIT K-ISG 3200 APPAREIL DE FRATTAGE A INDUCTION K-ISG 3200 • UNITA' DI CALETTAMENTO A INDUZIONE K-ISG 3200		PAG. 185
INDUKTIV-SCHRUMPFANLAGE K-ISG 2000 • INDUCTIVE SHRINK TO FIT UNIT K-ISG 2000 APPAREIL DE FRATTAGE A INDUCTION K-ISG 2000 • UNITA' DI CALETTAMENTO A INDUZIONE K-ISG 2000		PAG. 186
DOPPEL-KÜHLSTATION • DOUBLE COOLING STATION DOUBLE UNITE DE REFROIDISSEMENT • STAZIONE DOPPIA DI RAFFREDDAMENTO		PAG. 187
LÄNGEN MEßADAPTER • LENGHT SETTING ADAPTOR CALIBRE POUR LE REGLAGE D'OUTILS • CALIBRO DI REGOLAZIONE UTENSILI		PAG. 187
WERKZEUGAUFNAHME • TOOL ADAPTOR REDUCTION POUR LE MANDRIN • SUPPORTO PER MANDRINO		PAG. 188
KÜHLADAPTER • COOLING ALVEOLAR UNIT UNITE ALVEOLAIRE DE RAFFROIDISSEMENT • UNITA' ALVEOLARE DI RAFFREDDAMENTO		PAG. 188

**SCHRUMPFUTTER HSK 32 DIN 69893 Form A**  
**SHRINK FIT CHUCKS HSK 32 DIN69893 TYPE A**  
**MANDRINS DE FRETTAGE TYPE HSK 32 DIN 69893 A**  
**MANDRINI A CALETTAMENTO HSK 32 DIN 69893 tipo A**

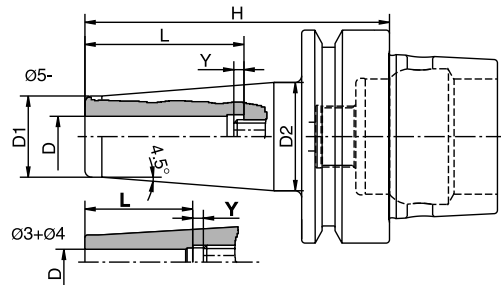
### HSK 32A



	Code N.	Description	D	H	L	Ymax	D1	D2	Stop screw
<b>STANDARD</b>	251-11792	HSK32AH60K03-HTT	3	60	19	10	11	16	811-303047
	251-11793	HSK32AH60K04-HTT	4	60	22	6	11	16	811-303047
	251-11794	HSK32AH60K05-HTT	5	60	28	5	13	18	811-303047
	251-11795	HSK32AH70K06-HTT	6	70	36	10	21	26	811-303047
	251-11796	HSK32AH70K08-HTT	8	70	36	10	21	26	811-303048
	251-11797	HSK32AH70K10-HTT	10	70	42	-	24	26	-
	251-11798	HSK32AH75K12-HTT	12	75	47	-	24	26	-
<b>EXTENDED</b>	251-11799	HSK32AH90K03-HTT	3	90	19	10	11	20	811-303047
	251-21701	HSK32AH90K04-HTT	4	90	22	10	11	20	811-303047
	251-21702	HSK32AH90K05-HTT	5	90	28	5	13	22	811-303047
	251-21703	HSK32AH100K06-HTT	6	100	36	10	21	26	811-303054
	251-21704	HSK32AH100K08-HTT	8	100	36	10	21	26	811-303055
	251-21705	HSK32AH100K10-HTT	10	100	42	10	24	26	811-303049
	251-21706	HSK32AH100K12-HTT	12	100	47	10	24	26	811-303050

**SCHRUMPFUTTER HSK 32 DIN 69893 Form E**  
**SHRINK FIT CHUCKS HSK 32 DIN69893 TYPE E**  
**MANDRINS DE FRETTAGE TYPE HSK 32 DIN 69893 E**  
**MANDRINI A CALETTAMENTO HSK 32 DIN 69893 tipo E**

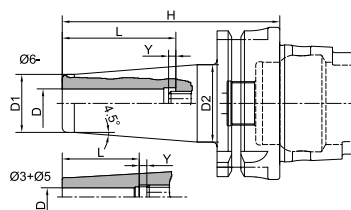
### HSK 32E



	Code N.	Description	D	H	L	Ymax	D1	D2	Stop screw
<b>STANDARD</b>	251-27315	HSK32EH60K03-HTT	3	60	19	10	11	16	811-303047
	251-27316	HSK32EH60K04-HTT	4	60	22	6	11	16	811-303047
	251-27317	HSK32EH60K05-HTT	5	60	28	5	13	18	811-303047
	251-27307	HSK32EH70K06-HTT	6	70	36	10	21	26	811-303047
	251-27308	HSK32EH70K08-HTT	8	70	36	10	21	26	811-303048
	251-27309	HSK32EH70K10-HTT	10	70	42	-	24	26	-
	251-27318	HSK32EH75K12-HTT	12	75	47	-	24	26	-
<b>EXTENDED</b>	251-27319	HSK32EH90K03-HTT	3	90	19	10	11	20	811-303047
	251-27320	HSK32EH90K04-HTT	4	90	22	10	11	20	811-303047
	251-27321	HSK32EH90K05-HTT	5	90	28	5	13	22	811-303047
	251-27311	HSK32EH100K06-HTT	6	100	36	10	21	26	811-303054
	251-27312	HSK32EH100K08-HTT	8	100	36	10	21	26	811-303055
	251-27313	HSK32EH100K10-HTT	10	100	42	10	24	26	811-303049
	251-27314	HSK32EH100K12-HTT	12	100	47	10	24	26	811-303050

**SCHRUMPFUTTER HSK 40 DIN 69893 Form A**  
**SHRINK FIT CHUCKS HSK 40 DIN69893 TYPE A**  
**MANDRINS DE FRETTAGE TYPE HSK 40 DIN 69893 A**  
**MANDRINI A CALETTAMENTO HSK 40 DIN 69893 tipo A**

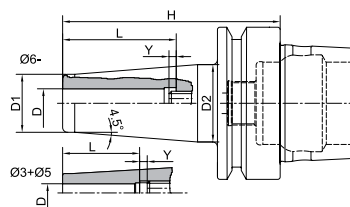
### HSK 40A



	Code N.	Description	D	H	L	Ymax	D1	D2	Stop screw
STANDARD	251-11740	HSK40AH80K03-HTT	3	80	19	10	11	19	811-303047
	251-11741	HSK40AH80K04-HTT	4	80	22	10	11	19	811-303047
	251-11742	HSK40AH80K05-HTT	5	80	28	10	13	21	811-303048
	251-11743	HSK40AH80K06-HTT	6	80	36	10	21	27	811-303054
	251-11744	HSK40AH80K08-HTT	8	80	36	10	21	27	811-303055
	251-11745	HSK40AH80K10-HTT	10	80	42	8	24	32	811-303063
	251-21707	HSK40AH90K12-HTT	12	90	47	10	24	32	811-303050
	251-11747	HSK40AH90K14-HTT	14	90	47	10	27	34	811-303050
	251-21708	HSK40AH90K16-HTT	16	90	50	10	27	34	811-303051
EXTENDED	251-21709	HSK40AH110K03-HTT	3	110	19	10	11	21	811-303047
	251-21710	HSK40AH110K04-HTT	4	110	22	10	11	21	811-303047
	251-21711	HSK40AH110K05-HTT	5	110	28	10	13	23	811-303048
	251-21712	HSK40AH110K06-HTT	6	110	36	10	21	27	811-303054
	251-21713	HSK40AH120K08-HTT	8	120	36	10	21	27	811-303055
	251-21714	HSK40AH120K10-HTT	10	120	42	10	24	32	811-303049
	251-21715	HSK40AH120K12-HTT	12	120	47	10	24	32	811-303050

**SCHRUMPFUTTER HSK 40 DIN 69893 Form E**  
**SHRINK FIT CHUCKS HSK 40 DIN69893 TYPE E**  
**MANDRINS DE FRETTAGE TYPE HSK 40 DIN 69893 E**  
**MANDRINI A CALETTAMENTO HSK 40 DIN 69893 tipo E**

### HSK 40E

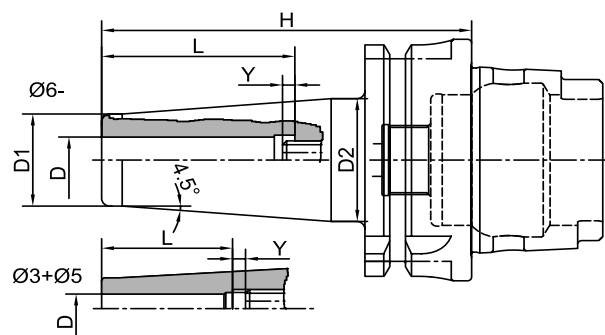


	Code N.	Description	D	H	L	Ymax	D1	D2	Stop screw
STANDARD	251-17374	HSK40EH80K03-HTT	3	80	19	10	11	19	811-303047
	251-17375	HSK40EH80K04-HTT	4	80	22	10	11	19	811-303047
	251-17376	HSK40EH80K05-HTT	5	80	28	10	13	21	811-303048
	251-17333	HSK40EH80K06-HTT	6	80	36	10	21	27	811-303054
	251-17334	HSK40EH80K08-HTT	8	80	36	10	21	27	811-303055
	251-17335	HSK40EH80K10-HTT	10	80	42	8	24	32	811-303063
	251-27322	HSK40EH90K12-HTT	12	90	47	10	24	32	811-303050
	251-17378	HSK40EH90K14-HTT	14	90	47	10	27	34	811-303050
	251-27323	HSK40EH90K16-HTT	16	90	50	10	27	34	811-303051
EXTENDED	251-17380	HSK40EH110K03-HTT	3	110	19	10	11	21	811-303047
	251-17381	HSK40EH110K04-HTT	4	110	22	10	11	21	811-303047
	251-17382	HSK40EH110K05-HTT	5	110	28	10	13	23	811-303048
	251-17383	HSK40EH110K06-HTT	6	110	36	10	21	27	811-303054
	251-17384	HSK40EH120K08-HTT	8	120	36	10	21	27	811-303055
	251-17385	HSK40EH120K10-HTT	10	120	42	10	24	32	811-303049
	251-17386	HSK40EH120K12-HTT	12	120	47	10	24	32	811-303050



**SCHRUMPFUTTER HSK 50 DIN 69893 Form A**  
**MANDRINS DE FRETTAGE TYPE HSK 50 DIN 69893 A**  
**SHRINK FIT CHUCKS HSK 50 DIN69893 TYPE A**  
**MANDRINI A CALETTAMENTO HSK 50 DIN 69893 tipo A**

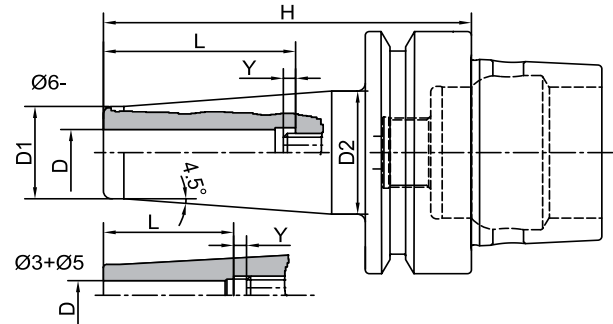
## HSK 50A



	Code N.	Description	D	H	L	Ymax	D1	D2	Stop screw
STANDARD	251-21716	HSK50AH80K03-HTT	3	80	19	10	11	18	811-303047
	251-21717	HSK50AH80K04-HTT	4	80	22	10	11	18	811-303047
	251-21718	HSK50AH80K05-HTT	5	80	28	10	13	20	811-303048
	251-21719	HSK50AH80K06-HTT	6	80	36	10	21	27	811-303054
	251-21720	HSK50AH80K08-HTT	8	80	36	10	21	27	811-303055
	251-21721	HSK50AH85K10-HTT	10	85	42	10	24	32	811-303049
	251-11704	HSK50AH90K12-HTT	12	90	47	10	24	32	811-303050
	251-11705	HSK50AH90K14-HTT	14	90	47	10	27	34	811-303050
	251-11706	HSK50AH95K16-HTT	16	95	50	10	27	34	811-303051
	251-11715	HSK50AH95K18-HTT	18	95	50	10	33	42	811-303051
	251-11716	HSK50AH100K20-HTT	20	100	52	10	33	42	811-303061
EXTENDED	251-21722	HSK50AH120K03-HTT	3	120	19	10	11	22	811-303047
	251-21723	HSK50AH120K04-HTT	4	120	22	10	11	22	811-303047
	251-21724	HSK50AH120K05-HTT	5	120	28	10	13	24	811-303048
	251-11717	HSK50AH120K06-HTT	6	120	36	10	21	27	811-303054
	251-11718	HSK50AH120K08-HTT	8	120	36	10	21	27	811-303055
	251-11719	HSK50AH120K10-HTT	10	120	42	10	24	32	811-303049
	251-11720	HSK50AH120K12-HTT	12	120	47	10	24	32	811-303050
	251-11721	HSK50AH120K14-HTT	14	120	47	10	27	34	811-303050
251-11722	HSK50AH120K16-HTT	16	120	50	10	27	34	811-303051	

**SCHRUMPFUTTER HSK 50 DIN 69893 Form E**  
**SHRINK FIT CHUCKS HSK 50 DIN69893 TYPE E**  
**MANDRINS DE FRETTAGE TYPE HSK 50 DIN 69893 E**  
**MANDRINI A CALETTAMENTO HSK 50 DIN 69893 tipo E**

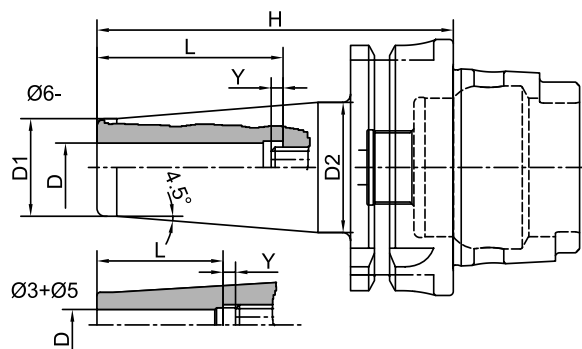
## HSK 50E



	Code N.	Description	D	H	L	Ymax	D1	D2	Stop screw
STANDARD	251-27324	HSK50EH80K03-HTT	3	80	19	10	11	18	811-303047
	251-27325	HSK50EH80K04-HTT	4	80	22	10	11	18	811-303047
	251-27326	HSK50EH80K05-HTT	5	80	28	10	13	20	811-303048
	251-27327	HSK50EH80K06-HTT	6	80	36	10	21	27	811-303054
	251-27328	HSK50EH80K08-HTT	8	80	36	10	21	27	811-303055
	251-27329	HSK50EH85K10-HTT	10	85	42	10	24	32	811-303049
	251-17304	HSK50EH90K12-HTT	12	90	47	10	24	32	811-303050
	251-17305	HSK50EH90K14-HTT	14	90	47	10	27	34	811-303050
	251-17306	HSK50EH95K16-HTT	16	95	50	10	27	34	811-303051
	251-17315	HSK50EH95K18-HTT	18	95	50	10	33	42	811-303051
	251-17316	HSK50EH100K20-HTT	20	100	52	10	33	42	811-303061
EXTENDED	251-27330	HSK50EH120K03-HTT	3	120	19	10	11	22	811-303047
	251-27331	HSK50EH120K04-HTT	4	120	22	10	11	22	811-303047
	251-27332	HSK50EH120K05-HTT	5	120	28	10	13	24	811-303048
	251-17317	HSK50EH120K06-HTT	6	120	36	10	21	27	811-303054
	251-17318	HSK50EH120K08-HTT	8	120	36	10	21	27	811-303055
	251-17319	HSK50EH120K10-HTT	10	120	42	10	24	32	811-303049
	251-17320	HSK50EH120K12-HTT	12	120	47	10	24	32	811-303050
	251-17321	HSK50EH120K14-HTT	14	120	47	10	27	34	811-303050
	251-17322	HSK50EH120K16-HTT	16	120	50	10	27	34	811-303051

**SCHRUMPFUTTER HSK 63 DIN 69893 Form A**  
**SHRINK FIT CHUCKS HSK 63 DIN69893 TYPE A**  
**MANDRINS DE FRETTAGE TYPE HSK 63 DIN 69893 A**  
**MANDRINI A CALETTAMENTO HSK 63 DIN 69893 tipo A**

# HSK 63A

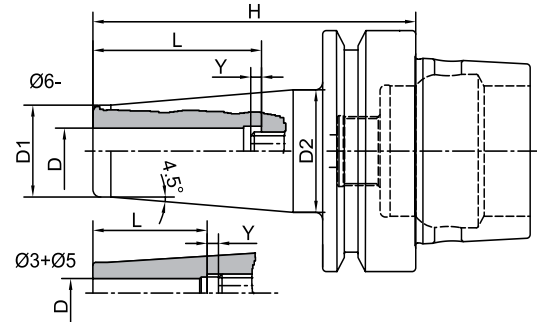


	Code N.	Description	D	H	L	Ymax	D1	D2	Stop screw
STANDARD	251-21725	HSK63AH80K03-HTT	3	80	19	10	11	18	811-303047
	251-21726	HSK63AH80K04-HTT	4	80	22	10	11	18	811-303047
	251-21727	HSK63AH80K05-HTT	5	80	28	10	13	20	811-303048
	251-21728	HSK63AH80K06-HTT	6	80	36	10	21	27	811-303054
	251-21729	HSK63AH80K08-HTT	8	80	36	10	21	27	811-303055
	251-21730	HSK63AH85K10-HTT	10	85	42	10	24	32	811-303049
	251-11710	HSK63AH90K12-HTT	12	90	47	10	24	32	811-303050
	251-11711	HSK63AH90K14-HTT	14	90	47	10	27	34	811-303050
	251-11712	HSK63AH95K16-HTT	16	95	50	10	27	34	811-303051
	251-11713	HSK63AH95K18-HTT	18	95	50	10	33	42	811-303051
	251-11714	HSK63AH100K20-HTT	20	100	52	10	33	42	811-303061
	251-21731	HSK63AH115K25-HTT	25	115	58	10	44	53	811-303061
EXTENDED	251-21732	HSK63AH120K03-HTT	3	120	19	10	11	22	811-303047
	251-21733	HSK63AH120K04-HTT	4	120	22	10	11	22	811-303047
	251-21734	HSK63AH120K05-HTT	5	120	28	10	13	24	811-303048
	251-11725	HSK63AH120K06-HTT	6	120	36	10	21	27	811-303054
	251-11726	HSK63AH120K08-HTT	8	120	36	10	21	27	811-303055
	251-11727	HSK63AH120K10-HTT	10	120	42	10	24	32	811-303049
	251-11728	HSK63AH120K12-HTT	12	120	47	10	24	32	811-303050
	251-11729	HSK63AH120K14-HTT	14	120	47	10	27	34	811-303050
251-11730	HSK63AH120K16-HTT	16	120	50	10	27	34	811-303051	



**SCHRUMPFUTTER HSK 63 DIN 69893 Form E**  
**SHRINK FIT CHUCKS HSK 63 DIN69893 TYPE E**  
**MANDRINS DE FRETTAGE TYPE HSK 63 DIN 69893 E**  
**MANDRINI A CALETTAMENTO HSK 63 DIN 69893 tipo E**

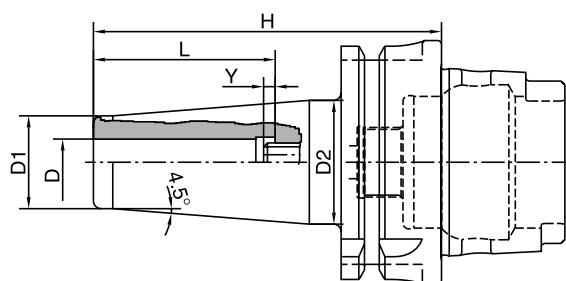
## HSK 63E



	Code N.	Description	D	H	L	Ymax	D1	D2	Stop screw
STANDARD	251-27333	HSK63EH80K03-HTT	3	80	19	10	11	18	811-303047
	251-27334	HSK63EH80K04-HTT	4	80	22	10	11	18	811-303047
	251-27335	HSK63EH80K05-HTT	5	80	28	10	13	20	811-303048
	251-27336	HSK63EH80K06-HTT	6	80	36	10	21	27	811-303054
	251-27337	HSK63EH80K08-HTT	8	80	36	10	21	27	811-303055
	251-27338	HSK63EH85K10-HTT	10	85	42	10	24	32	811-303049
	251-17310	HSK63EH90K12-HTT	12	90	47	10	24	32	811-303050
	251-17311	HSK63EH90K14-HTT	14	90	47	10	27	34	811-303050
	251-17312	HSK63EH95K16-HTT	16	95	50	10	27	34	811-303051
	251-17313	HSK63EH95K18-HTT	18	95	50	10	33	42	811-303051
	251-17314	HSK63EH100K20-HTT	20	100	52	10	33	42	811-303061
	251-27339	HSK63EH115K25-HTT	25	115	58	10	44	53	811-303061
EXTENDED	251-27340	HSK63EH120K03-HTT	3	120	19	10	11	22	811-303047
	251-27341	HSK63EH120K04-HTT	4	120	22	10	11	22	811-303047
	251-27342	HSK63EH120K05-HTT	5	120	28	10	13	24	811-303048
	251-17325	HSK63EH120K06-HTT	6	120	36	10	21	27	811-303054
	251-17326	HSK63EH120K08-HTT	8	120	36	10	21	27	811-303055
	251-17327	HSK63EH120K10-HTT	10	120	42	10	24	32	811-303049
	251-17328	HSK63EH120K12-HTT	12	120	47	10	24	32	811-303050
	251-17329	HSK63EH120K14-HTT	14	120	47	10	27	34	811-303050
	251-17330	HSK63EH120K16-HTT	16	120	50	10	27	34	811-303051

SCHRUMPFUTTER HSK 100 DIN 69893 Form A  
 SHRINK FIT CHUCKS HSK 100 DIN69893 TYPE A  
 MANDRINS DE FRETTAGE TYPE HSK 100 DIN 69893 A  
 MANDRINI A CALETTAMENTO HSK 100 DIN 69893 tipo A

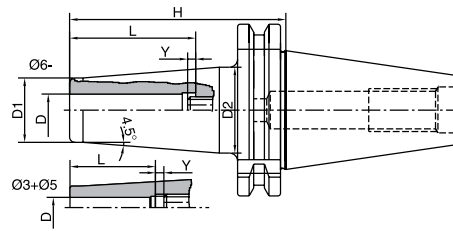
### HSK 100A



	Code N.	Description	D	H	L	Ymax	D1	D2	Stop screw
STANDARD	251-21735	HSK100AH85K06-HTT	6	85	36	10	21	27	811-303054
	251-21736	HSK100AH85K08-HTT	8	85	36	10	21	27	811-303055
	251-21737	HSK100AH90K10-HTT	10	90	42	10	24	32	811-303049
	251-21738	HSK100AH95K12-HTT	12	95	47	10	24	32	811-303050
	251-21739	HSK100AH95K14-HTT	14	95	47	10	27	34	811-303050
	251-21740	HSK100AH100K16-HTT	16	100	50	10	27	34	811-303051
	251-21741	HSK100AH100K18-HTT	18	100	50	10	33	42	811-303051
	251-21742	HSK100AH105K20-HTT	20	105	52	10	33	42	811-303061
	251-21743	HSK100AH115K25-HTT	25	115	58	10	44	53	811-303061
EXTENDED	251-21744	HSK100AH125K06-HTT	6	125	36	10	21	27	811-303054
	251-21745	HSK100AH125K08-HTT	8	125	36	10	21	27	811-303055
	251-21746	HSK100AH125K10-HTT	10	125	42	10	24	32	811-303049
	251-21747	HSK100AH125K12-HTT	12	125	47	10	24	32	811-303050
	251-21748	HSK100AH125K14-HTT	14	125	47	10	27	34	811-303050
	251-21749	HSK100AH135K16-HTT	16	135	50	10	27	34	811-303051
	251-21750	HSK100AH135K18-HTT	18	135	50	10	33	42	811-303051
	251-21751	HSK100AH135K20-HTT	20	135	52	10	33	42	811-303061

**SCHRUMPFUTTER ISO 30 DIN 69871 AD**  
**SHRINK FIT CHUCKS ISO 30 DIN 69871 AD**  
**MANDRINS DE FRETTAGE TYPE ISO 30 DIN 69871 AD**  
**MANDRINI A CALETTAMENTO ISO 30 DIN 69871 AD**

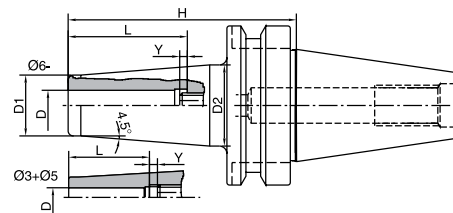
### DIN 69871 AD



	Code N.	Description	D	H	L	Ymax	D1	D2	Stop screw
STANDARD	251-11279	TC30H80K03-HTT	3	80	19	10	11	19	811-303047
	251-11280	TC30H80K04-HTT	4	80	22	10	11	19	811-303047
	251-11281	TC30H80K05-HTT	5	80	28	10	13	21	811-303048
	251-11282	TC30H80K06-HTT	6	80	36	10	21	27	811-303054
	251-11283	TC30H80K08-HTT	8	80	36	10	21	27	811-303055
	251-11284	TC30H80K10-HTT	10	80	42	10	24	32	811-303049
	251-11285	TC30H80K12-HTT	12	80	47	10	24	32	811-303050
	251-11286	TC30H80K14-HTT	14	80	47	10	27	34	811-303050
251-11287	TC30H80K16-HTT	16	80	50	10	27	34	811-303051	
EXTENDED	251-11288	TC30H110K03-HTT	3	110	19	10	11	21	811-303047
	251-11289	TC30H110K04-HTT	4	110	22	10	11	21	811-303047
	251-11290	TC30H110K05-HTT	5	110	28	10	13	23	811-303048
	251-11291	TC30H110K06-HTT	6	110	36	10	21	27	811-303054
	251-11292	TC30H120K08-HTT	8	120	36	10	21	27	811-303055
	251-11293	TC30H120K10-HTT	10	120	42	10	24	32	811-303049
	251-11294	TC30H120K12-HTT	12	120	47	10	24	32	811-303050

**MANDRINI A CALETTAMENTO MAS BT-30 tipo AD**  
**SHRINK FIT CHUCKS MAS BT-30 type AD**  
**SCHRUMPFUTTER MAS BT-30 Form AD**  
**MANDRINS DE FRETTAGE TYPE MAS BT-30 AD**

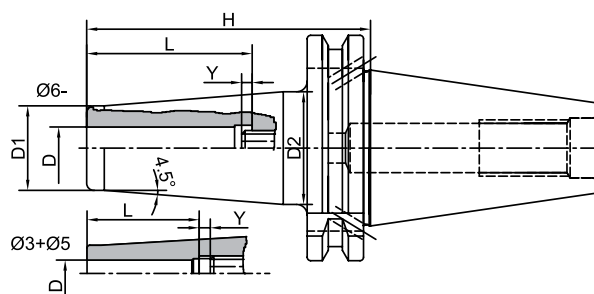
### MAS-BT AD



	Code N.	Description	D	H	L	Ymax	D1	D2	Stop screw
STANDARD	251-11564	BT30H80K03-HTT	3	80	19	10	11	19	811-303047
	251-11565	BT30H80K04-HTT	4	80	22	10	11	19	811-303047
	251-11566	BT30H80K05-HTT	5	80	28	10	13	21	811-303048
	251-11567	BT30H80K06-HTT	6	80	36	10	21	27	811-303054
	251-11568	BT30H80K08-HTT	8	80	36	10	21	27	811-303055
	251-11569	BT30H80K10-HTT	10	80	42	10	24	32	811-303049
	251-11570	BT30H80K12-HTT	12	80	47	10	24	32	811-303050
	251-11571	BT30H80K14-HTT	14	80	47	10	27	34	811-303050
	251-11572	BT30H80K16-HTT	16	80	50	10	27	34	811-303051
EXTENDED	251-11573	BT30H110K03-HTT	3	110	19	10	11	21	811-303047
	251-11574	BT30H110K04-HTT	4	110	22	10	11	21	811-303047
	251-11575	BT30H110K05-HTT	5	110	28	10	13	23	811-303048
	251-11576	BT30H110K06-HTT	6	110	36	10	21	27	811-303054
	251-11577	BT30H120K08-HTT	8	120	36	10	21	27	811-303055
	251-11578	BT30H120K10-HTT	10	120	42	10	24	32	811-303049
	251-11579	BT30H120K12-HTT	12	120	47	10	24	32	811-303050

SCHRUMPFUTTER ISO 40 DIN 69871 AD/B  
 SHRINK FIT CHUCKS ISO 40 DIN 69871 AD/B  
 MANDRINS DE FRETTAGE TYPE ISO 40 DIN 69871 AD/B  
 MANDRINI A CALETTAMENTO ISO 40 DIN 69871 AD/B

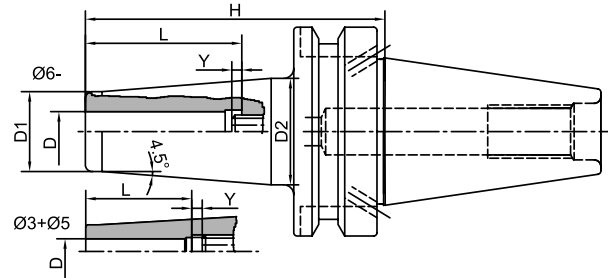
### DIN 69871 AD/B



	Code N.	Description	D	H	L	Ymax	D1	D2	Stop screw
STANDARD	251-11232	TC40H80K03-HTT	3	80	19	10	11	19	811-303047
	251-11225	TC40H80K04-HTT	4	80	22	10	11	19	811-303047
	251-11233	TC40H80K05-HTT	5	80	28	10	13	21	811-303048
	251-11201	TC40H80K06-HTT	6	80	36	10	21	27	811-303054
	251-11202	TC40H80K08-HTT	8	80	36	10	21	27	811-303055
	251-11203	TC40H80K10-HTT	10	80	42	10	24	32	811-303049
	251-11204	TC40H80K12-HTT	12	80	47	10	24	32	811-303050
	251-11206	TC40H80K14-HTT	14	80	47	10	27	34	811-303050
	251-11205	TC40H80K16-HTT	16	80	50	10	27	34	811-303051
	251-11207	TC40H80K18-HTT	18	80	50	10	33	41	811-303051
	251-11208	TC40H80K20-HTT	20	80	52	10	33	41	811-303061
	251-11218	TC40H100K25-HTT	25	100	58	10	44	50	811-303065
EXTENDED	251-11295	TC40H120K03-HTT	3	120	19	10	11	22	811-303047
	251-11296	TC40H120K04-HTT	4	120	22	10	11	22	811-303047
	251-11297	TC40H120K05-HTT	5	120	28	10	13	24	811-303048
	251-11209	TC40H120K06-HTT	6	120	36	10	21	27	811-303054
	251-11210	TC40H120K08-HTT	8	120	36	10	21	27	811-303055
	251-11211	TC40H120K10-HTT	10	120	42	10	24	32	811-303049
	251-11212	TC40H120K12-HTT	12	120	47	10	24	32	811-303050
	251-21201	TC40H120K14-HTT	14	120	47	10	27	34	811-303050
	251-11298	TC40H120K16-HTT	16	120	50	10	27	34	811-303051

**SCHRUMPFUTTER MAS BT-40 Form AD/B**  
**SHRINK FIT CHUCKS MAS BT-40 type AD/B**  
**MANDRINS DE FRETTAGE TYPE MAS BT-40 tipe AD/B**  
**MANDRINI A CALETTAMENTO MAS BT-40 tipo AD/B**

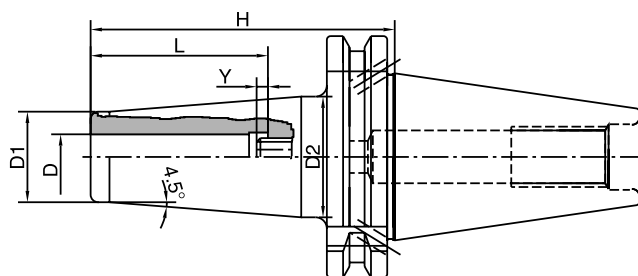
## MAS-BT AD/B



Code N.	Description	D	H	L	Ymax	D1	D2	Stop screw	
STANDARD	251-11580	BT40H90K03-HTT	3	90	19	10	11	19	811-303047
	251-11581	BT40H90K04-HTT	4	90	22	10	11	19	811-303047
	251-11582	BT40H90K05-HTT	5	90	28	10	13	21	811-303048
	251-11501	BT40H90K06-HTT	6	90	36	10	21	27	811-303054
	251-11502	BT40H90K08-HTT	8	90	36	10	21	27	811-303055
	251-11503	BT40H90K10-HTT	10	90	42	10	24	32	811-303049
	251-11504	BT40H90K12-HTT	12	90	47	10	24	32	811-303050
	251-11505	BT40H90K14-HTT	14	90	47	10	27	34	811-303050
	251-11506	BT40H90K16-HTT	16	90	50	10	27	34	811-303051
	251-11507	BT40H90K18-HTT	18	90	50	10	33	41	811-303051
	251-11508	BT40H90K20-HTT	20	90	52	10	33	41	811-303061
	251-11547	BT40H105K25-HTT	25	105	58	10	44	53	811-303065
EXTENDED	251-11583	BT40H120K03-HTT	3	120	19	10	11	22	811-303047
	251-11584	BT40H120K04-HTT	4	120	22	10	11	22	811-303047
	251-11585	BT40H120K05-HTT	5	120	28	10	13	24	811-303048
	251-11509	BT40H120K06-HTT	6	120	36	10	21	27	811-303054
	251-11510	BT40H120K08-HTT	8	120	36	10	21	27	811-303055
	251-11511	BT40H120K10-HTT	10	120	42	10	24	32	811-303049
	251-11512	BT40H120K12-HTT	12	120	47	10	24	32	811-303050
	251-11587	BT40H120K14-HTT	14	120	47	10	27	34	811-303050
251-11586	BT40H120K16-HTT	16	120	50	10	27	34	811-303051	

**SCHRUMPFUTTER ISO 50 DIN 69871 AD/B**  
**SHRINK FIT CHUCKS ISO 50 DIN 69871 AD/B**  
**MANDRINS DE FRETTAGE TYPE ISO 50 DIN 69871 AD/B**  
**MANDRINI A CALETTAMENTO ISO 50 DIN 69871 AD/B**

## DIN 69871 AD/B

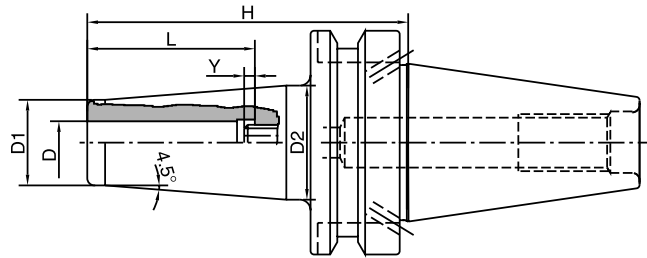


	Code N.	Description	D	H	L	Ymax	D1	D2	Stop screw
STANDARD	251-11234	TC50H80K06-HTT	6	80	36	10	21	27	811-303054
	251-11235	TC50H80K08-HTT	8	80	36	10	21	27	811-303055
	251-11236	TC50H80K10-HTT	10	80	42	10	24	32	811-303049
	251-11237	TC50H80K12-HTT	12	80	47	10	24	32	811-303050
	251-11238	TC50H80K14-HTT	14	80	47	10	27	34	811-303050
	251-11224	TC50H80K16-HTT	16	80	50	10	27	34	811-303051
	251-11239	TC50H80K18-HTT	18	80	50	10	33	41	811-303051
	251-11240	TC50H80K20-HTT	20	80	52	10	33	41	811-303061
	251-11241	TC50H100K25-HTT	25	100	58	10	44	53	811-303065
EXTENDED	251-11242	TC50H120K06-HTT	6	120	36	10	21	27	811-303054
	251-11243	TC50H120K08-HTT	8	120	36	10	21	27	811-303055
	251-11244	TC50H120K10-HTT	10	120	42	10	24	32	811-303049
	251-11245	TC50H120K12-HTT	12	120	47	10	24	32	811-303050
	251-11246	TC50H120K14-HTT	14	120	47	10	27	34	811-303050
	251-11247	TC50H120K16-HTT	16	120	50	10	27	34	811-303051
	251-11248	TC50H120K18-HTT	18	120	50	10	33	42	811-303051
	251-11249	TC50H120K20-HTT	20	120	52	10	33	42	811-303061



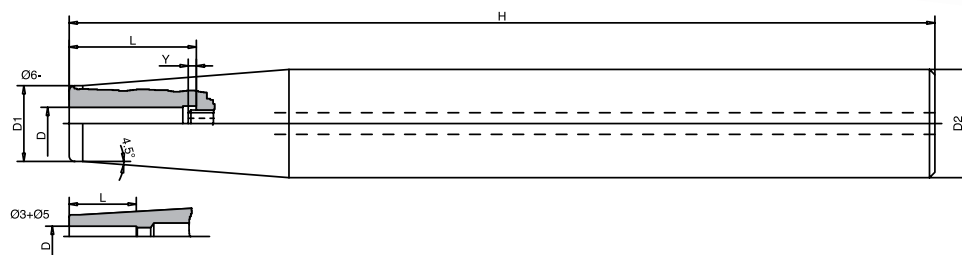
**SCHRUMPFUTTER MAS BT-50 Form AD/B**  
**SHRINK FIT CHUCKS MAS BT-50 type AD/B**  
**MANDRINS DE FRETTAGE TYPE MAS BT-50 AD/B**  
**MANDRINI A CALETTAMENTO MAS BT-50 tipo AD/B**

## MAS-BT AD/B



	Code N.	Description	D	H	L	Ymax	D1	D2	Stop screw
<b>STANDARD</b>	251-11548	BT50H100K06-HTT	6	100	36	10	21	27	811-303054
	251-11549	BT50H100K08-HTT	8	100	36	10	21	27	811-303055
	251-11550	BT50H100K10-HTT	10	100	42	10	24	32	811-303049
	251-11517	BT50H100K12-HTT	12	100	47	10	24	32	811-303050
	251-11551	BT50H100K14-HTT	14	100	47	10	27	34	811-303050
	251-11552	BT50H100K16-HTT	16	100	50	10	27	34	811-303051
	251-11553	BT50H100K18-HTT	18	100	50	10	33	41	811-303051
	251-11554	BT50H100K20-HTT	20	100	52	10	33	41	811-303061
	251-11555	BT50H115K25-HTT	25	115	58	10	44	53	811-303065
<b>EXTENDED</b>	251-11556	BT50H135K06-HTT	6	135	36	10	21	27	811-303054
	251-11557	BT50H135K08-HTT	8	135	36	10	21	27	811-303055
	251-11558	BT50H135K10-HTT	10	135	42	10	24	32	811-303049
	251-11559	BT50H135K12-HTT	12	135	47	10	24	32	811-303050
	251-11560	BT50H135K14-HTT	14	135	47	10	27	34	811-303050
	251-11561	BT50H135K16-HTT	16	135	50	10	27	34	811-303051
	251-11562	BT50H135K18-HTT	18	135	50	10	33	42	811-303051
	251-11563	BT50H135K20-HTT	20	135	52	10	33	42	811-303061

**SCHRUMPFVERLÄNGERUNGEN  
SHRINKING EXTENSIONS  
RALLONGES DE FRETAGE  
PROLUNGHE PER CALETTAMENTO**



Code N.	Description	D	H	L	Ymax	D1	D2	Stop screw
251-15110	D12H160K03-HTT	3	160	9	-	8	12	-
251-15111	D12H160K04-HTT	4	160	12	-	8	12	-
251-15112	D16H160K03-HTT	3	160	9	-	10	16	-
251-15113	D16H160K04-HTT	4	160	12	-	10	16	-
251-15114	D16H160K05-HTT	5	160	15	-	10	16	-
251-15115	D16H160K06-HTT	6	160	28	10	10	16	811-303054
251-15116	D20H160K05-HTT	5	160	15	-	14	20	-
251-15117	D20H160K06-HTT	6	160	28	10	14	20	811-303054
251-15118	D20H160K08-HTT	8	160	34	10	14	20	811-303055
251-15119	D25H160K08-HTT	8	160	34	10	19	25	811-303055
251-15120	D25H160K10-HTT	10	160	42	10	20	25	811-303049
251-15121	D25H160K12-HTT	12	160	47	10	20	25	811-303050
251-15122	D25H160K14-HTT	14	160	47	10	20	25	811-303050
251-15123	D25H160K16-HTT	16	160	50	10	22	25	811-303051
251-15124	D32H160K10-HTT	10	160	42	10	27	32	811-303049
251-15125	D32H160K12-HTT	12	160	47	10	27	32	811-303050
251-15126	D32H160K14-HTT	14	160	47	10	27	32	811-303050
251-15127	D32H160K16-HTT	16	160	50	10	27	32	811-303051
251-15128	D32H160K20-HTT	20	160	52	10	27	32	811-303061

**INDUKTIV-SCHRUMPFANLAGE K-ISG 3200**  
**INDUCTIVE SHRINK TO FIT UNIT K-ISG 3200**  
**APPAREIL DE FRETTAGE A INDUCTION K-ISG 3200**  
**UNITA' DI CALETTAMENTO A INDUZIONE K-ISG 3200**



Code N

K-ISG 3200

HM from Ø3 to Ø32  
 HSS from Ø6 to Ø50

**STAZIONE UNIVERSALE, AUTOMATICA (43 KG - 584X592X1030)**

- CICLO DI RISCALDAMENTO/RAFFREDDAMENTO COMPLETAMENTE AUTOMATICO, SEMPLICEMENTE INSERENDO IL Ø DELL'UTENSILE
- MENU IN PIU' LINGUE
- 4 STAZIONI DI RAFFREDDAMENTO INCORPORATE (AUTOMATICHE)
- TEMPO DI CALETTAMENTO: DA 5 A 10 SECONDI
- PER UTENSILI IN METALLO DURO (DA Ø3 A Ø32) E IN HSS (DA Ø6 A Ø50)
- ALIMENTAZIONE 3X400V/ 16A
- POTENZA ASSORBITA: 7,5 kW

**UNIVERSAL SHRINKING STATION (43 KGS - 584X592X1030)**

- FULL AUTOMATIC MODE TO MANAGE THE COMPLETE SHRINKING PROCESS -HEATING AND COOLING- JUST BY ENTERING THE TOOL'S DIAMETRE
- EASY MENU IN DIFFERENT LANGUAGES
- 4 INTEGRATED COOLING STATIONS (AUTOMATIC CONTROLLED)
- SHRINKING TIME FROM 5 TO 10 SECONDS
- TO SUITE CARBIDE TOOLS (FROM Ø3 TO Ø32) AND HSS TOOLS (Ø6 TO Ø50)
- POWER SUPPLY: 3X400V/16A
- POWER ABSORPTION 7,5 kW

**UNIVERSELLE SCHRUMPFSTATION, AUTOMATISCH GESTEUERT (43 KGS - 584X592X1030)**

- VOLLAUTOMATISCH GESTEUERT: ES GENÜGT, DEN WERZEUGDURCHMESSER AUSZUWÄHLEN
- IN MEHRERE SPRACHEN VORWÄHLBAR
- 4 ABKÜHLUNGSSTATIONEN INTEGRIERT (AUTOMATISCH GESTEUERT)
- SCHRUMPFZEIT VON 5 BIS 10 SEKUNDE
- FÜR WERKZEUGEN IN HARTMETALL (VON Ø3 BIS Ø32) UND HSS (Ø6 BIS Ø50)
- STROMVERSORGUNG: 3X400V/16A
- LEISTUNGS-AUFNAHME: 7,5Kw

**APPAREIL UNIVERSEL DE FRETTAGE (43 KGS - 584X592X1030)**

- MODALITE AUTOMATIQUE COMPLETE: PROGRAMME POUR FAIRE LE FRETTAGE COMPLET - CHAUFFAGE ET REFROIDISSEMENT - EN DOIGTANT SEULEMENT LE DIAMETRE DE LA QUEUE D'OUTIL
- MENU FACILE AVEC BEAUCOUP DE LANGUES
- 4 STATIONS DE REFROIDISSEMENT INTEGrees (CONTROLEES AUTOMATIQUEMENT)
- TEMP DE FRETTAGE DE 5 AU 10 SECONDES
- POUR LE SERRAGE DES OUTILS EN CARBURE (DU Ø3 AU Ø32) ET HSS (DU Ø6 AU Ø50)
- ALIMENTATION: 3X400V /16A
- PUISSANCE ABSORBEE CS 7,5 KW

**INDUKTIV-SCHRUMPFANLAGE K-ISG 2000**  
**INDUCTIVE SHRINK TO FIT UNIT K-ISG 2000**  
**APPAREIL DE FRETAGE A INDUCTION K-ISG 2000**  
**UNITA' DI CALETTAMENTO A INDUZIONE K-ISG 2000**



Code N

K-ISG 2000

HM from Ø6 to Ø20

**UNITA' PORTATILE, MANUALE (25 KG - 390X310X640mm)**

- DISPLAY DIGITALE PER IL SETTAGGIO DEL TEMPO DI RISCALDAMENTO/RAFFREDDAMENTO
- STAZIONE DI RAFFREDDAMENTO INTEGRATA
- BOBINA INDUTTIVA INTEGRATA
- SOLO PER UTENSILI IN METALLO DURO DA Ø 6 A Ø20 mm
- SEMPLICE ISTALLAZIONE: CONNESSIONE 230V/ 16A
- POTENZA ASSORBITA: 3 KW

**MANUAL DESKTOP DEVICE (25 KGS - 390X310X640mm)**

- DIGITAL DISPLAY TO SET HEATING AND COOLING TIME
- INTEGRATED COOLING STATION
- INTEGRATED INDUCTION COIL
- TO SUIT ONLY CARBIDE TOOLS FROM Ø6 TO Ø20
- EASY INSTALLATION: 230V power supply with 16A security
- POWER ABSORPTION: 3 kW

**MOBILE SCHRUMPFSTATION, MANUELL (25 KGS - 390X310X640 mm)**

- DURCH DIGITAL-DISPLAY SCHRUMPFEN- UND ABKÜHLUNGSLAUFZEITEN EINSTELLBAR
- ABKÜHLUNGSSTATION INTEGRIERT
- INDUKTIONSSPULE INTEGRIERT
- NUR FÜR HARTMETALLWERKZEUGE VON Ø 6 BIS Ø 20
- EINFACH ZU INSTALLIEREN: 230V Stromversorgung 16A Sicherheit
- LEISTUNGS-AUFNAHME: 3Kw

**APPAREIL MANUEL ET PORTATIF (25 KGS - 390X310X640mm)**

- ECRAN DIGITAL POUR REGLER LE TEMP DE CHAUFFAGE ET DE REFROIDISSEMENT
- APPAREIL A REFROIDISSEMENT INTEGREE
- BOBINE INDUCTIVE INTEGREE
- SEULEMENT POUR OUTILS EN CARBURE DE Ø 6 JUSQU'A Ø20 mm
- INSTALLATION FACILE: 230V alimentation avec 16A de securité
- PUISSANCE ABSORBEE: 3 KW

## DOPPEL-KÜHLSTATION DOUBLE COOLING DEVICE DOUBLE UNITE DE REFROIDISSEMENT STAZIONE DOPPIA DI RAFFREDDAMENTO



Code N

K-ISG 2002

### STAZIONE DOPPIA DI RAFFREDDAMENTO

- CONTROLLATA DA UN PROCESSORE (REGOLAZIONE DEL TEMPO DA 1 A 10 MINUTI)
- ALIMENTAZIONE: 230V

### DOUBLE COOLING DEVICE (FOR K-ISG2000/K-ISG3000)

- PROCESSOR CONTROLLED (TIME CAN BE SET FROM 1 UP TO 10 MIN)
- POWER SUPPLY: 230V

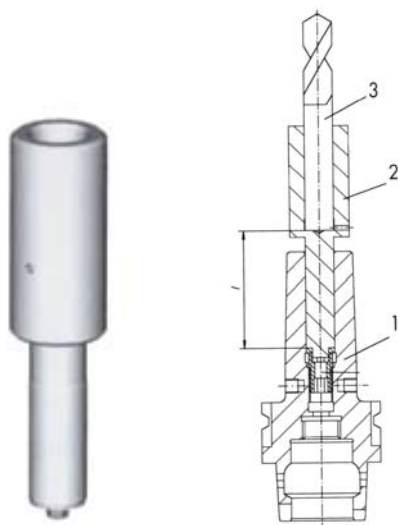
### DOPPEL-KÜHLSTATION FÜR K-ISG2000/K-ISG3000

- PROCESSORGESTEUERT (LAUFZEIT VON 1 BIS 10 MIN. EINGESTELLT WERDEN KANN)
- STROMVERSORGUNG: 230V

### DOUBLE UNITE DE REFROIDISSEMENT (POUR K-ISG2000/K-ISG3000)

- PROCESSEUR CONTROLLE (ON PEUT CHANGER LE TEMP DE 1 A 10 MTNUTES)
- ALIMENTATION: 230V

## LÄNGEN MEßADAPTER LENGHT SETTING ADAPTOR CALIBRE POUR LE REGLAGE D'OUTILS CALIBRO DI REGOLAZIONE UTENSILI



Code N

K - MO600
K - MO800
K - M1000
K - M1200
K - M1400
K - M1600
K - M1800
K - M2000
K - M2500
K - M3200

### CALIBRO DI REGOLAZIONE UTENSILI

Il presettaggio dell'utensile avviene prima del calettamento: inserire il (2)calibro di regolazione (80 +/- 0,02mm) con l'utensile (3) nel foro del portautensile (1). Girare il calibro - che agisce sulla vite di registro- fino ad ottenere la lunghezza desiderata . Rimuovere quindi il calibro, posizionare l'utensile nel foro mandrino e procedere con il calettamento

### PRESETTING THE TOOL LENGHT

The presetting of the tool length is carried out before the shrinking process by means of a setting adapter (2), which has to be plugged into the chuck (1) together with the tool. By turning the measuring adapter (80+/- 0.02mm) the length will be adjusted through an internal screw. After removing the adapter the tool will fit into the chuck at the desired length and will be ready for the shrinking.

### LÄNGENVOREINSTELLUNG DER WERKZEUGE

Die Längenvoreinstellung erfolgt vor dem Schrumpfvorgang mittels Einstelladapter (2). Dieser wird mit dem Werkzeug (3) zusammen in das Spannfutter (1) gesteckt und durch Verdrehen des Messadapters wird die Werkzeuglänge über eine Nachstellschraube bestimmt. Anschließend wird der Messadapter (80 +/- 0,02mm) entnommen und das Werkzeug eingeschrumpft.

### PRE-REGLAGE DES LONGUEURS D'OUTILS

Le pré-reglage de la longueur de l'outil est effectué avant le processus de rétraction au moyen de l'adaptateur de réglage (2). Celui-ci est inséré avec l'outil (3) dans le mandrin de serrage (1), et en faisant tourner l'adaptateur de mesure (80 +/- 0,02mm) est retiré et l'outil rétréci.

**WERZEUGADAPTER  
TOOL ADAPTORS  
ADAPTATEUR POUR LE MANDRIN  
SUPPORTO PER MANDRINO**



**Code N**

K - HSK 32
K - HSK 40
K - HSK 50
K - HSK 63
K - HSK 100
K - SK 40
K - SK 50

**KÜHLADAPTER  
COOLING ALVEOLAR UNIT  
UNITE ALVEOLAIRE DE RAFFROIDISSEMENT  
UNITA' ALVEOLARE DI RAFFREDDAMENTO**



**Code N**

K - K6/K9
K - K9,1/K12
K - K12,1/K16
K - K16,1/K22
K - K22,1/K32

**UNITA' ALVEOLARE DI RAFFREDDAMENTO (PER K-ISG2000/K-ISG3200)**

- ADATTATORE IN ALLUMINIO PER RIDURRE IL TEMPO DI RAFFREDDAMENTO
- DA UTILIZZARSI SU PORTAUTENSILI CON L MAX 120mm

**COOLING ALVEOLAR UNIT (FOR K-ISG2000/K-ISG3200)**

- ALUMINIUM ADAPTORS TO REDUCE THE COOLING TIME
- TO BE USED FOR HOLDERS UP TO L=120mm

**KÜHLADAPTER FOR K-ISG200/K-ISG3200**

- ALUMINIUM KÜHLADAPTER FÜR DAS SCHNELLE ABKÜHLEN
- FÜR SCHRUMPFUTTER MIT L BIS 120mm MAX.

**UNITE ALVEOLAIRE DE REFFROIDISSEMENT (POUR K-ISG2000/K-ISG3200)**

- ADAPTATEURS EN ALUMINIUM POUR REDUIRE LE TEMP DE REFFROIDISSEMENT
- A UTILISER POUR MANDRINS AVEC LONGUEUR JUSQU'A 120mm